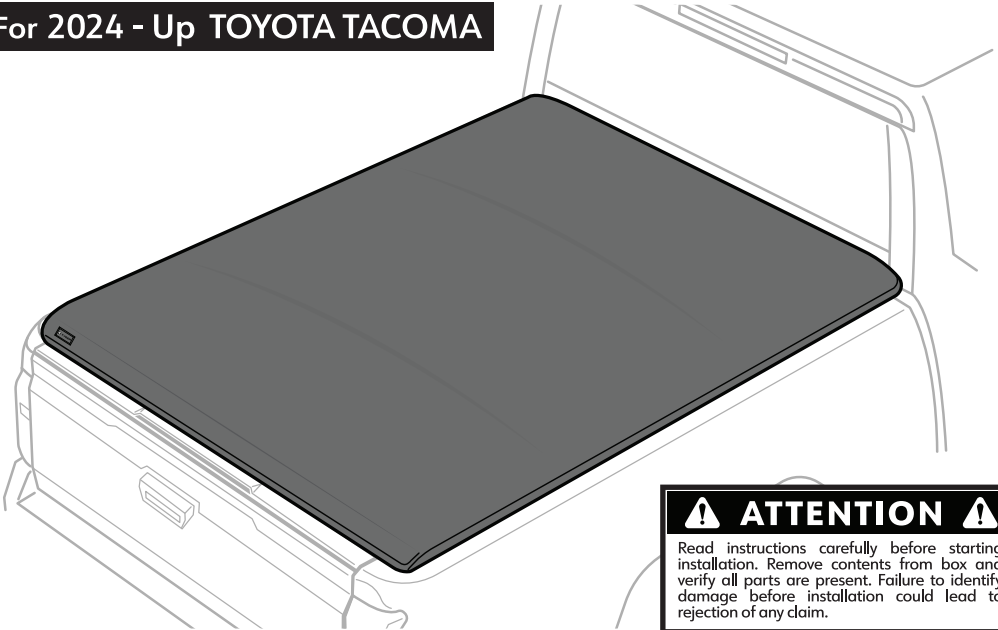




# TYGER<sup>®</sup>

# T1 | SOFT ROLL-UP TONNEAU COVER

For 2024 - Up TOYOTA TACOMA



**⚠ ATTENTION ⚠**  
Read instructions carefully before starting installation. Remove contents from box and verify all parts are present. Failure to identify damage before installation could lead to rejection of any claim.

**TOOLS REQUIRED**  
(NOT INCLUDED)

10mm Socket    Ratchet Wrench    Phillips Screwdriver

Scan to Download the Latest Digital Version



**DAMAGED or MISSING PARTS?**  
**NEED HELP?**  
contact us: **1-866-340-3038**

## PARTS LIST

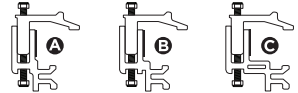
Bed Cover



SP-BC1032 **A**  
 SP-BC1033 **B**  
 SP-BC1034 **C**

Mounted Clamps for Utility Track

NOTE: The letters **A**, **B** and **C** etched on side of the clamps.



Side Rails (L & R)  
(A, B and C etched on the face of the rail)



SP-BC0014  
Front Seal Strip  
150 x 2.0 x 0.4cm



SP-BC0015  
Bulkhead Seal Strip  
150 x 2.3 x 1.7cm



SP-BC0016  
Bulkhead Side Seal Strip  
6.0 x 2.5 x 2.5cm



SP-BC0017  
Bulkhead Side Seal Foam  
3.5 x 2.6 x 0.3cm



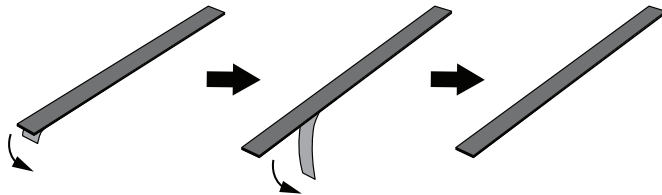
**i**



# 1 APPLYING SEAL STRIPS **i**

The Tacoma's front bed rail area requires sealing foams to fill the gaps on each side and to level the uneven surfaces around the bed rail.

**ATTENTION: GAPS ON THE FRONT BED AND TAILGATE CAN CAUSE NOISE AND FLAPPING ISSUES WHILE DRIVING ALONG WITH WATER LEAKAGE.**

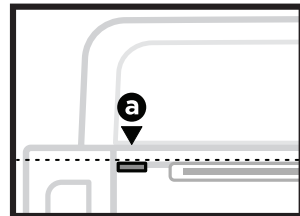
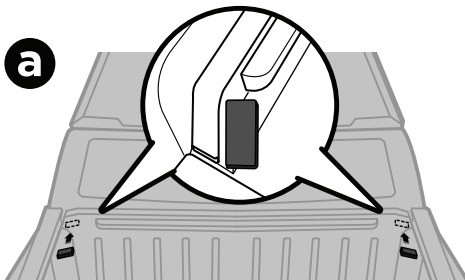


**SP-BC0016**




**Bulkhead Side Seal Strip**

Attached on each side to be used as a base for the long seal strips in Steps **b** and **c**.

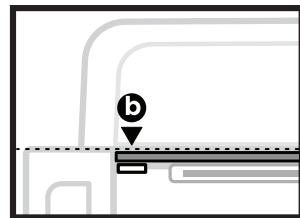
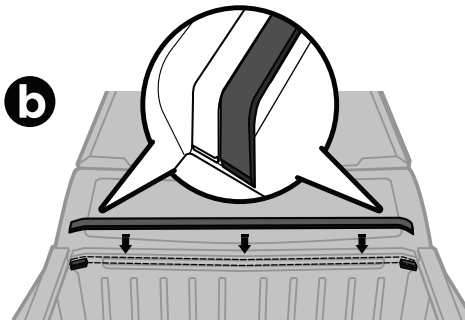


**SP-BC0015**




**Bulkhead Seal Strip (1.7cm thick)**

Used to level the lower bulk head with the side bed rails.

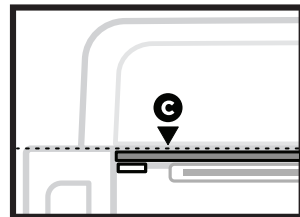
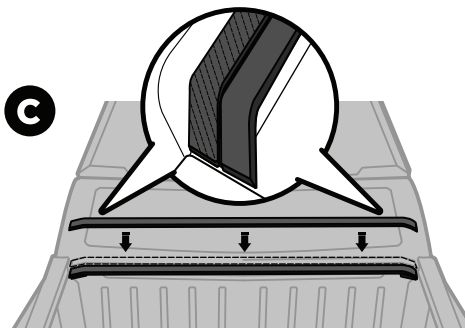


**SP-BC0014**



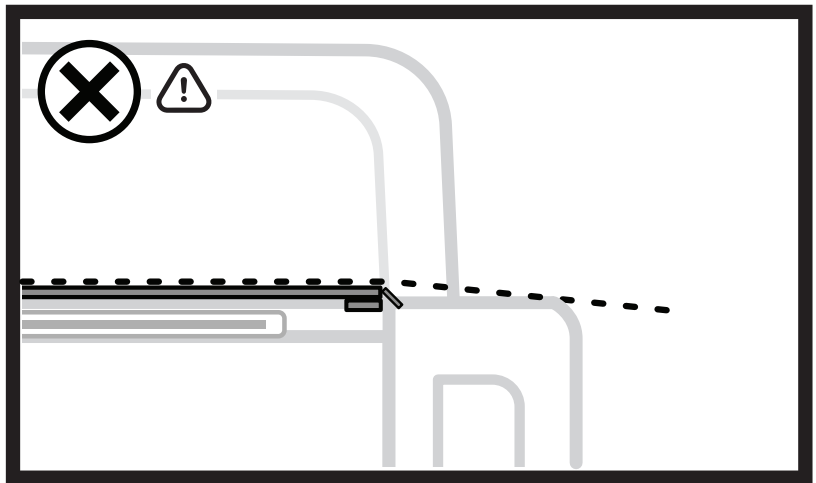
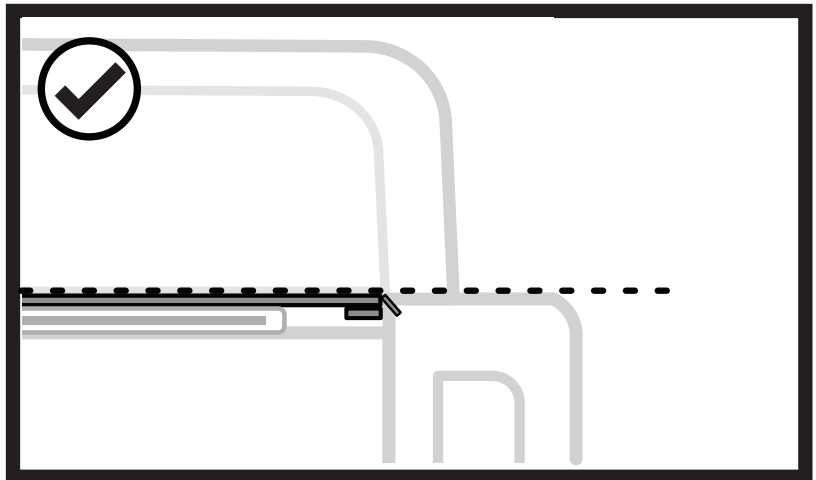
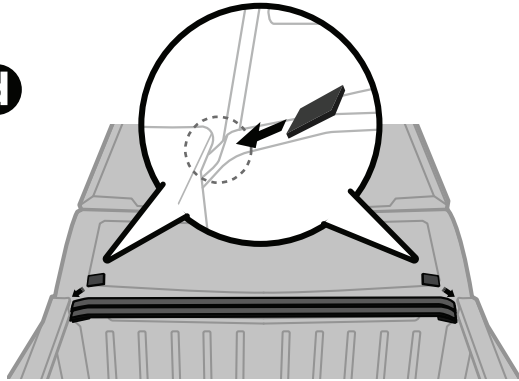
**Front Seal Strip (0.4cm thick)**

Used to level the front bed rail with the side bed rails.





Slide these into the narrow gaps between the front and side bed panels.

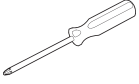
**d****ATTENTION**

The sponge strips must be on the same plane, otherwise will cause water leaking.



**YOU NEED**

Phillips-Head  
Screwdriver

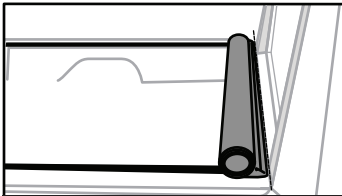
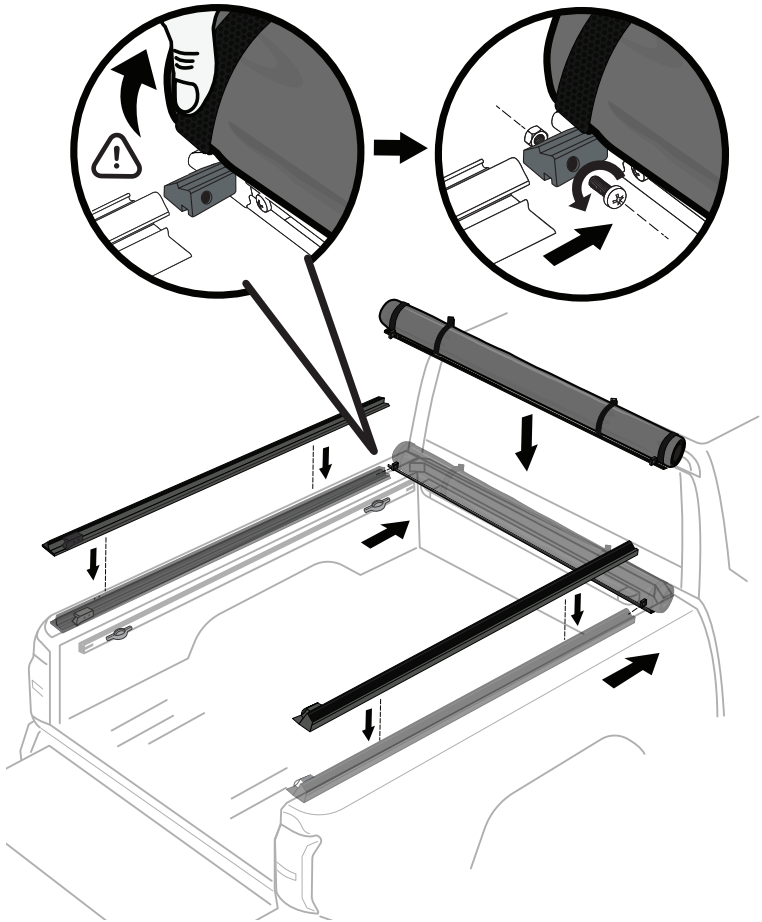


**ATTENTION**

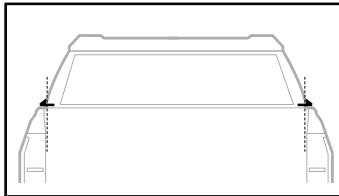
Lift tarp while inserting  
side rail to prevent  
tearing!

## 2 ASSEMBLING COVER ⓘ

- Place cover assembly on front truck bed rail against the cab.
- Loosen the screw in bulkhead assembly on both sides, then slide in the side rails.
- Reinstall and tighten screws to attach side rails to cover assembly.



The base of the front cover assembly must be positioned right up against the left and right rear window post panels. Make sure there is no gap between the weather seal tape and the cover base.



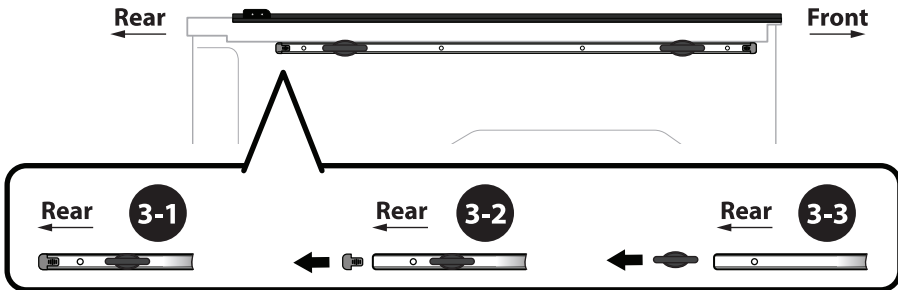
The inner portions of bed cover side rails will taper off towards the tailgate end and partially hover over the side panel railings into the cargo space in order for the rear clamps to access the rail channel.



The cover side rails may not seem parallel with the bed panel railings but both side rails must be symmetrically spaced between each other and their tailgate ends must be aligned for proper latching.

### 3 INSTALL THE ALTERNATE BRACKETS

Models with utility tracks require alternate brackets to access the bed railing lip. First, remove any tie-down anchors installed along the tracks. Then, in the following order, slide in **A > B > C** marked alternate brackets to each matching position marked on the cover side rails. Slide anchors back in between the brackets if needed.

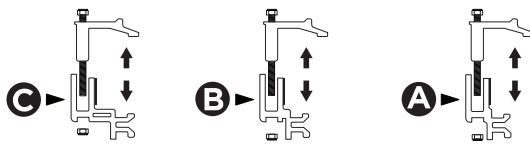


(A, B and C etched on the clamps)

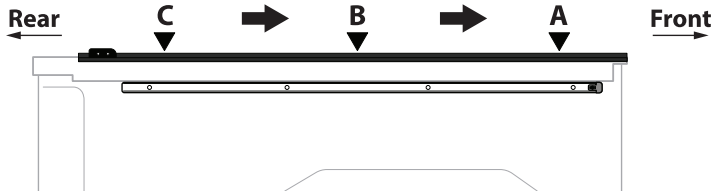
SP-BC1034

SP-BC1033

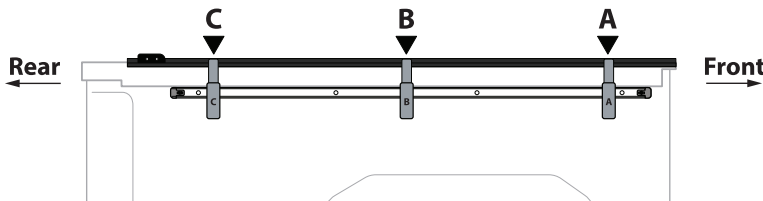
SP-BC1032



(A, B and C etched along the rail)



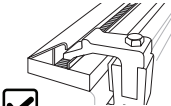
3-5



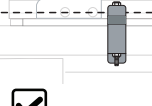
#### ATTENTION

Inside Channel

Out of Channel

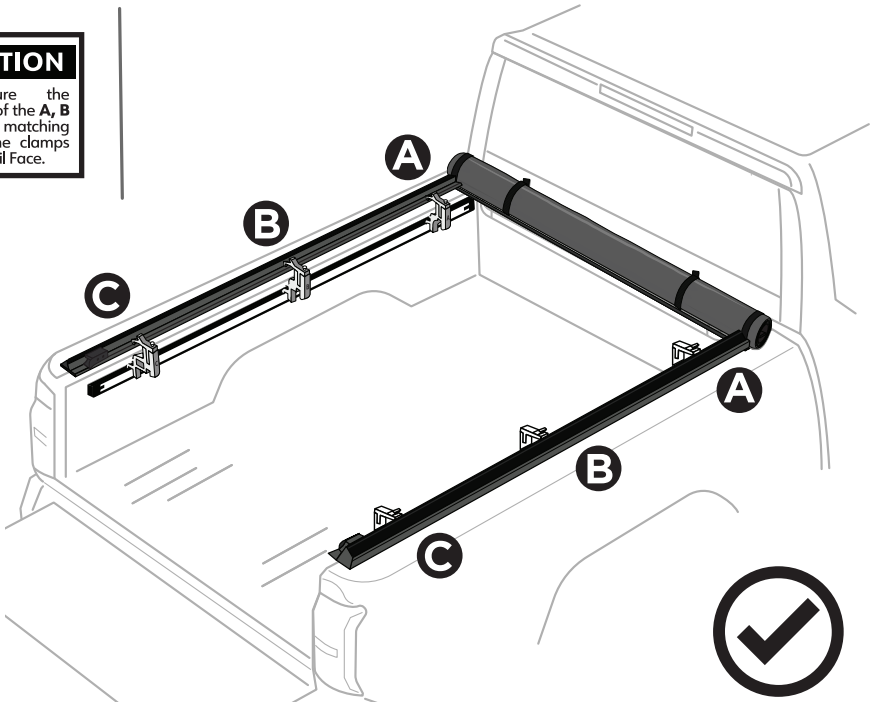


#### NOTE

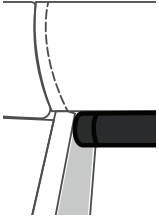


**ATTENTION**

Make sure the alignment of the **A**, **B** and **C** are matching both on the clamps side and Rail Face.



**ATTENTION**



Incorrect positioning of the crossbars can cause water to pool on the cover.

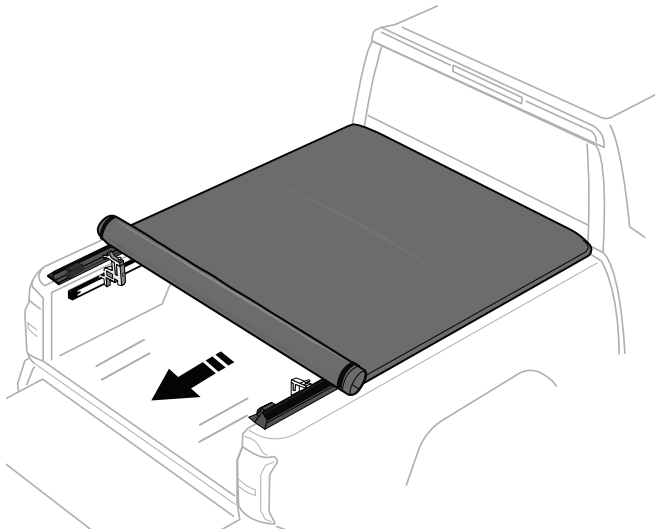
**ATTENTION**



Horizontal crossbars are arched by design to help drain and prevent water pooling. Make sure the arched side is facing up during installation.

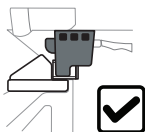
**4 ROLLING OUT THE COVER**

- Unhook the safety straps.
- Make sure the ends of the crossbars are resting on the side rail ledges and crossbars are arched upward.

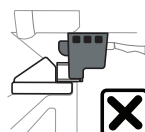




**WARNING!**



In Channel



NOT In Channel

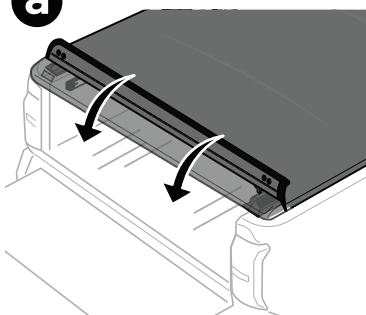
**NOTE**

For latching issue, refer to **PAGE 12** for trouble shooting instruction.

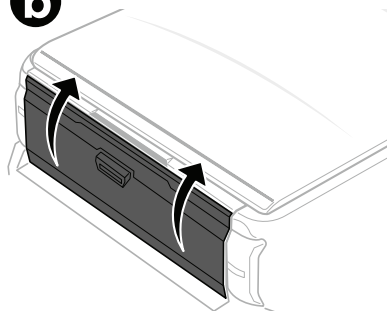
## 5 LOCKING THE COVER

- Push down the end of the cover with sufficient force to close it.
- The cover must be closed first before you shut the tailgate.

**a**



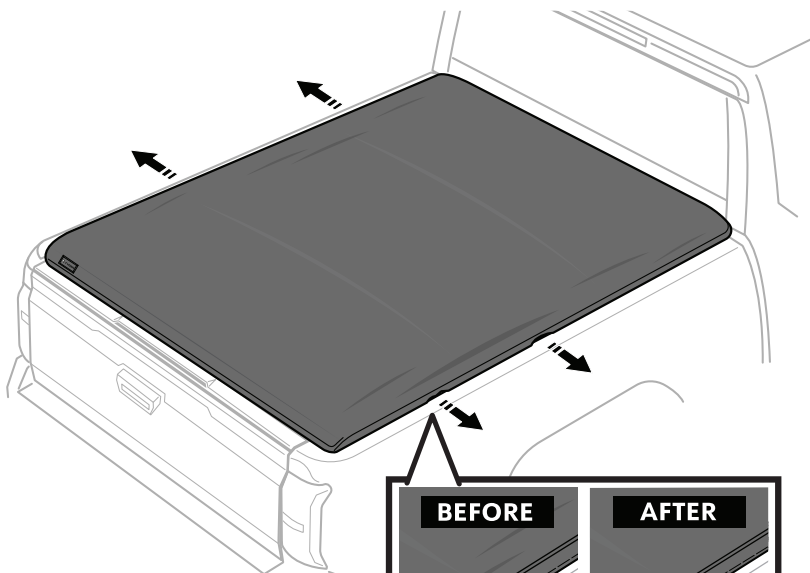
**b**



**CLICK!!!**

## 6 STRAIGHTENING OUT THE COVER

- Stretch out the cover tarp on both sides to remove any wrinkles and make sure both velcro strips are properly fastened and sealed to prevent water leak.



**NOTE**



Velcro Strips must be fully fastened to prevent water from leaking in.

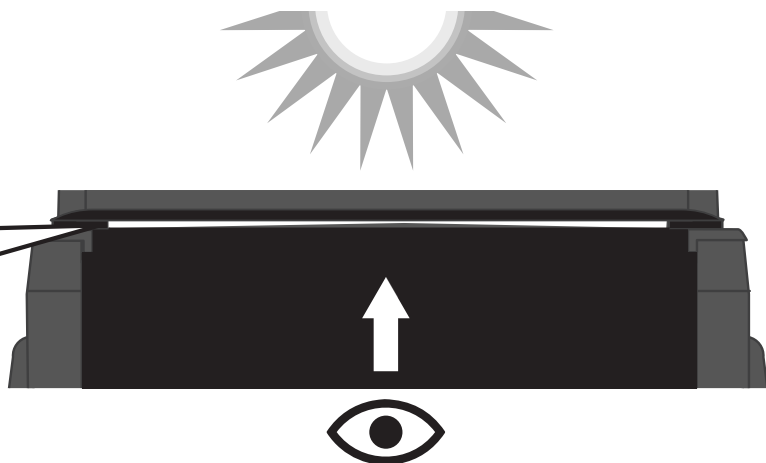
**BEFORE**

**AFTER**



## 7 CHECKING FOR GAPS ⓘ

- With the tailgate open, visually inspect for light leaking through the gaps. Apply additional sealing strips to fill the gaps then reinspect and repeat.



# INSTALLATION COMPLETE!!!





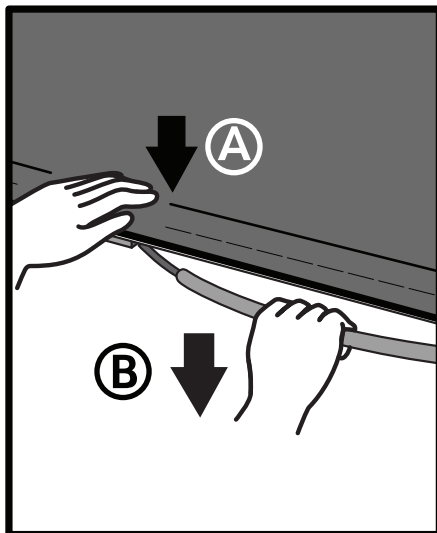
# AFTER INSTALLATION

## 8 RELEASING THE COVER ⓘ



### NOTE

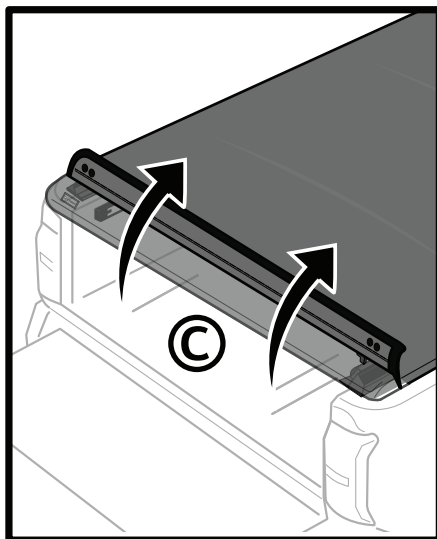
Pressing down on the cover edge will improve the release.



- Open the tailgate and push down against the cover edge with one hand.



- Pull on latch cable to release the cover with the other hand.



- Roll up the cover closely.

## 9 ROLLING UP THE COVER ⓘ



### ATTENTION

Make sure the cover is free from any debris before rolling it up. Safety straps must be buckled and tightened before driving.

### NOTE

Cover may not fully cover all the way to the outer edges of the bed rails due to small variance in bed sizes from different year models.



DO NOT  
overload cargo



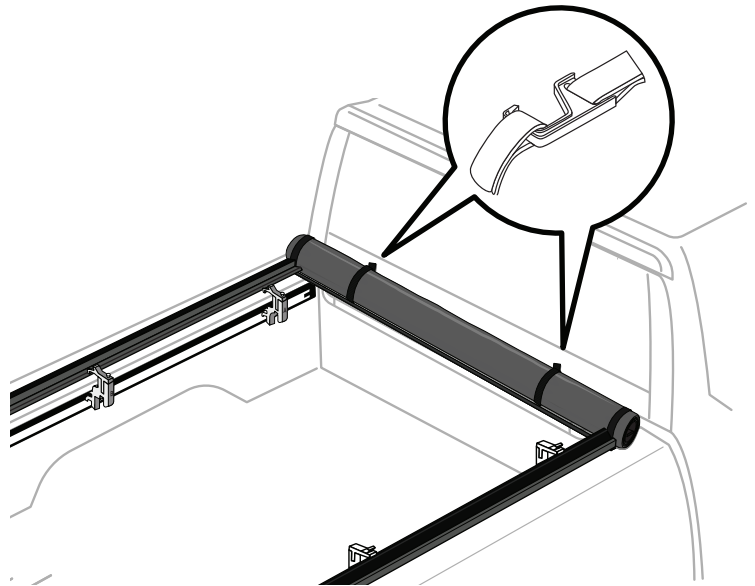
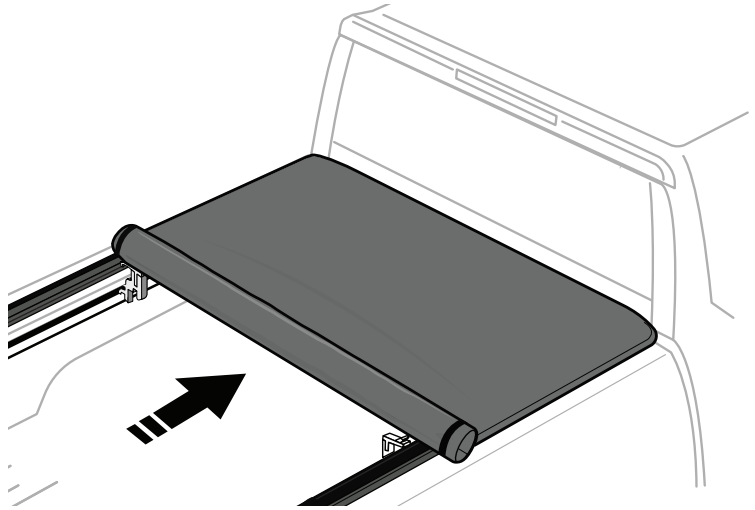
Secure strap buckles  
before driving



Remove snow before  
rolling up cover

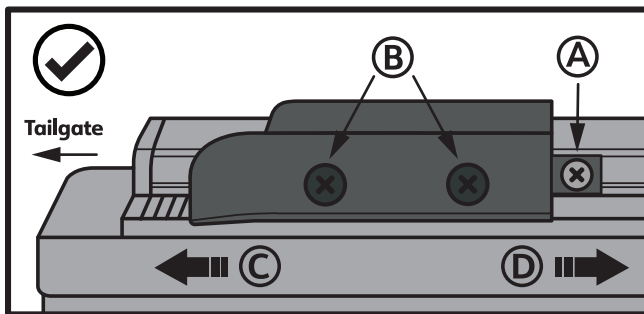
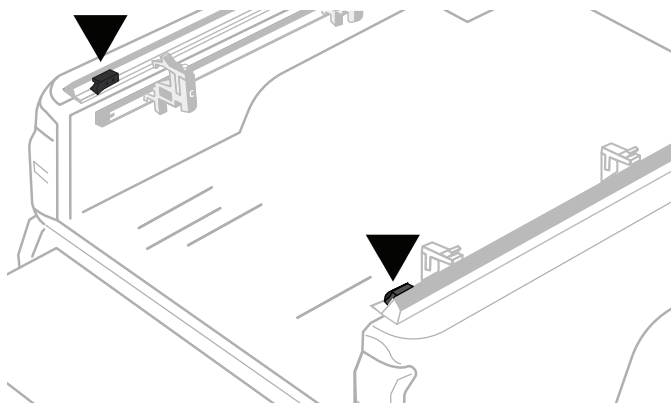


Use water and soap to clean.  
Avoid abrasive  
chemical cleaners



# 10 SELF-MAINTENANCE THE TENSION CONTROL SYSTEM ⓘ

**NOTE:** Tension plate adjustment is not required for brand-new tonneau covers. If the tension between the bulkhead & tension plate has become loose or tight over time. You can adjust the tension plate position to improve the tension control.



- (A)** • First loosen the front screw in the rail channel. Do not fully remove this screw.
- (B)** • Then loosen the 2 screws in the tension plate block. DO NOT fully remove these screws. This allows the tension plate to slide back and forth.
- (C)** • To increase the tension (latching is too loose), move the tension plate towards the tailgate. Re-tighten first the **(A)** then **(B)** screws.
- (D)** • To decrease the tension (latching is too tight), move the tension plate towards the front. Re-tighten first the **(A)** then **(B)** screws.

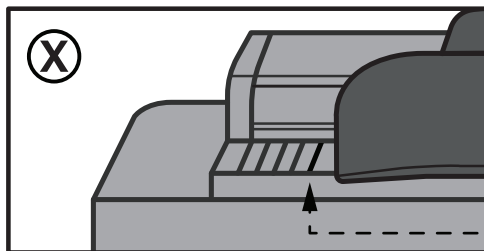
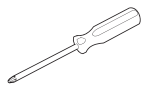


## NOTE

Only move one increment at a time. Each increment gives you 1/8" of tension adjustment. Apply the same adjustment to both sides' tension plates.

## YOU NEED

Phillips-Head  
Screwdriver

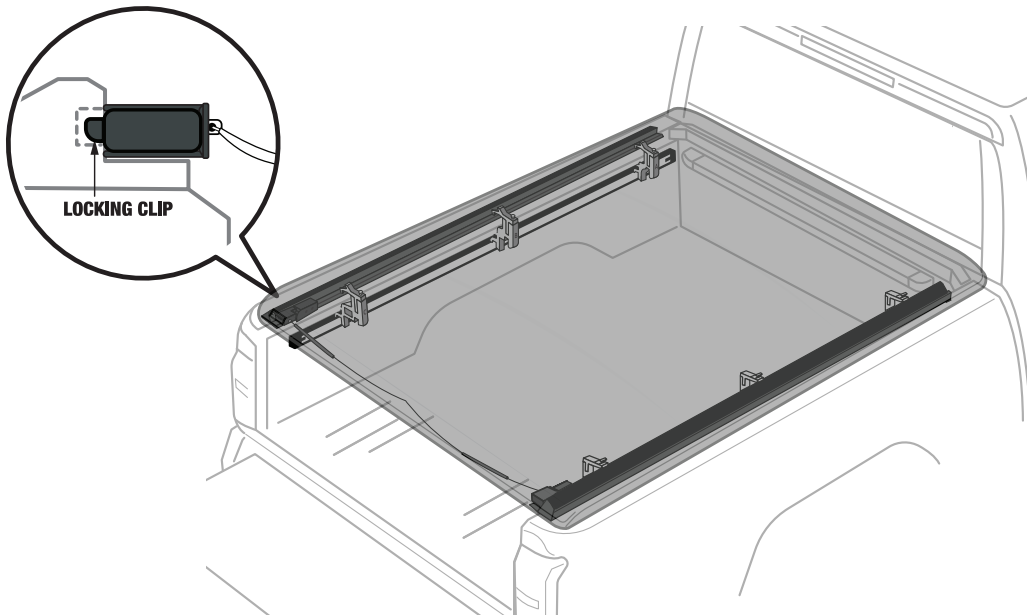


## ⚠ ATTENTION

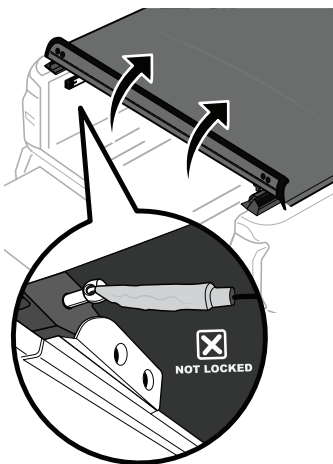
• DO NOT Adjust the tension plate beyond the last increment line.

# 11 COVER DOESN'T STAY LATCHED?

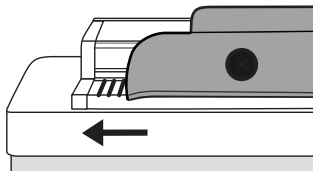
- Make sure the locking clip on both sides are completely inserted into the channel on the side rails to avoid end of the cover becoming unlatched.



- 12** • If cover doesn't stay closed and you find the locking clip is not fully inserted.



- 13** • If needed, follow instructions in **PAGE 11** To adjust the tension plate.



- 14** • Make sure the locking clip on both sides are inserted into the channel on the side rails.

