



TYGER®

FENDER FLARE

TG-FF8F4688



ATTENTION!

PLEASE READ THE INSTRUCTIONS CAREFULLY BEFORE STARTING INSTALLATION. FOLLOW EACH STEP AS DESCRIBED ON THIS OFFICIAL GUIDE. FAILURE TO DO SO MAY CAUSE DAMAGE TO YOUR VEHICLE AND VOID THE WARRANTY.



WARNING!

DIRT OR DEBRIS MAY BECOME LODGED BETWEEN FLARES AND BODY PANEL CAUSING SCRATCHING AND PAINT-WEAR AS A RESULT OF VEHICLE VIBRATION. TYGER™ IS NOT RESPONSIBLE FOR SUCH DAMAGE, AND INSTALLATION IS DONE WITH BUYER'S UNDERSTANDING THAT THIS DAMAGE MAY OCCUR.

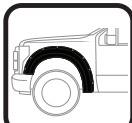
PRIOR TO INSTALLATION:



CHECK EVERYTHING BEFORE INSTALLATION



USE NON-ABRASIVE SURFACE TO INSTALL



VERIFY FITMENT OF FLARES TO VEHICLE



REMOVE DECALS & MUD FLAPS FIRST



ABRASIVE DETERGENT IS PROHIBITED

SAFETY INFORMATION:



NO AUTOMATIC BRUSH-STYLE WASH



CHECK TIGHTNESS



CHECK CAREFULLY BEFORE DRIVE

ABOUT PAINTING: Painted flares cannot be returned. Test fit before painting. We are not responsible for any costs that may incur if flares were painted without test fitting.

- Clean surface to be painted with a good grade degreaser. Do not use lacquer thinner or any solvent based product.
- Wipe flare surface completely dry with a tack rag prior to paint.
- Application of plastic adhesion promoter for PP plastic as per your paint system manufacturer's recommendations is required.
- Use a high quality enamel or polyurethane automotive paint to paint the flares.
- Not recommend to paint the edge trim, but if desired use a flex additive.

Parts List:



Driver/Left Side Front Flare



Passenger/Right Side Front Flare



Driver/Left Side Rear Flare



Passenger/Right Side Rear Flare



[A] Edge Trim



[B] Torx Bolt



[C] SS Washer



[D] Nylock Nut



[E] T45 Torx Bit



[F] Mylar Tab



[G] S-Clip



[H] PH Metal Screw

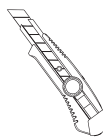


[I] Nylon Retainer

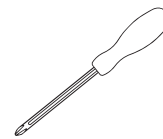


[J] Edge Trim Tool

Tools For Easier Installation



Utility Knife



#2 Phillips Driver



1/2" Wrench



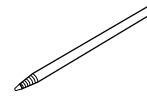
Socket Wrench



7/32" Socket



10mm Socket



Grease Pencil



Work Gloves

DAMAGED or MISSING parts?

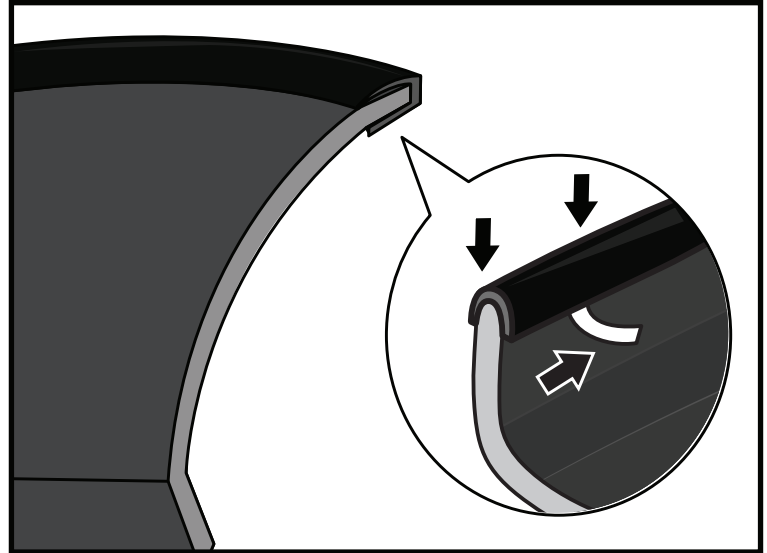
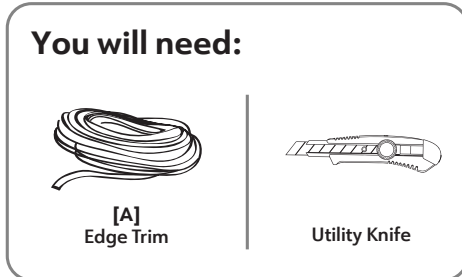
www.tygerauto.com/contact



Edge Trim Installation

Peel 2 to 3" of red vinyl backing off from one end of the **Edge Trim [A]**.

- Apply **Edge Trim [A]** over top edge of flare with adhesive side attached to the inside edge of flare..
- Press **Edge Trim [A]** into place and apply thumb pressure to ensure good adhesion, continue to peel off red backing as you work your way along flare edge in one-foot increments.

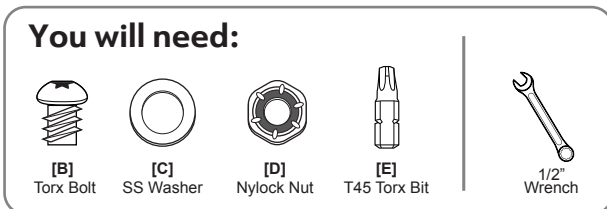


⚠ Note!

DO NOT stretch Edge Trim during application.

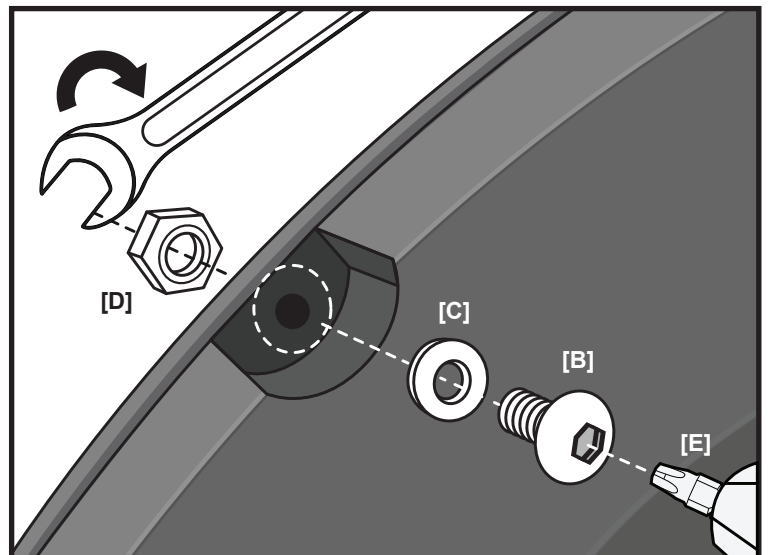
Decorative Rivet Installation

- Thread a **Torx Bolt [B]** with a **Washer [C]** through each of the pocket holes around the flare and use a **Nylock Nut [D]** to secure it from the other side. Use a socket wrench and the supplied **Torx Bit [E]** on an electric drill to tighten bolts. DO NOT over-tighten as this may damage the flare.



⚠ Note!

- DO NOT drill holes on the vehicle body as rivets are decorative and fasten only to the flare. Do not attempt to use the bolts to fasten flare to vehicle body.
- All exposed fasteners and bare metal should be treated with rust resistant paint before installing flares. Spray inner fender wells with undercoating after flare installation.
- Vehicles with large tires may require lowering bump stops and/or installing steering stops to prevent tire from contacting flares.
- Modification may be necessary to maintain a minimum 4" clearance between flares and exhaust pipes. (Exhaust gas should not vent directly onto flares)



Front Flares Installation

(Driver Side shown)



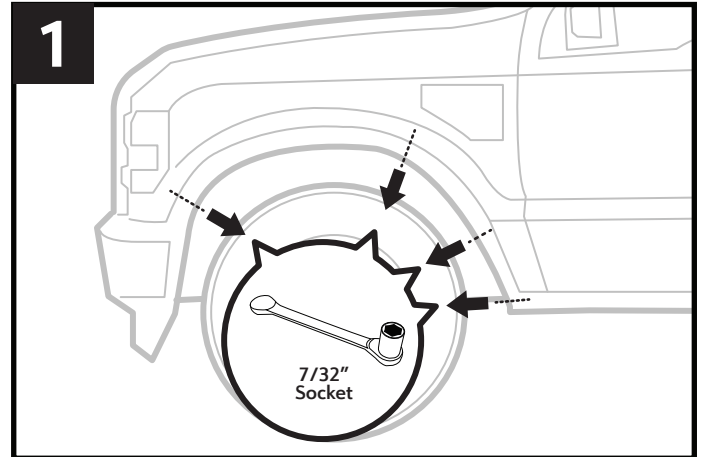
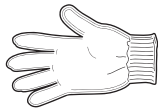
NOTE!

Only use appropriate cleaning supplies for your vehicle. If needed, clean and dry off before you begin installing.

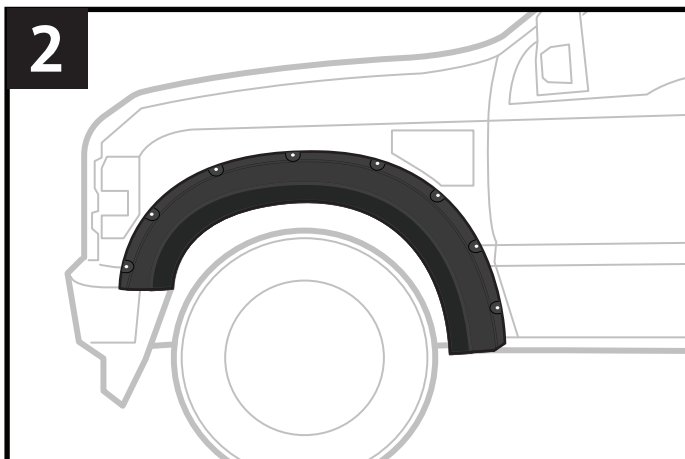


ATTENTION!

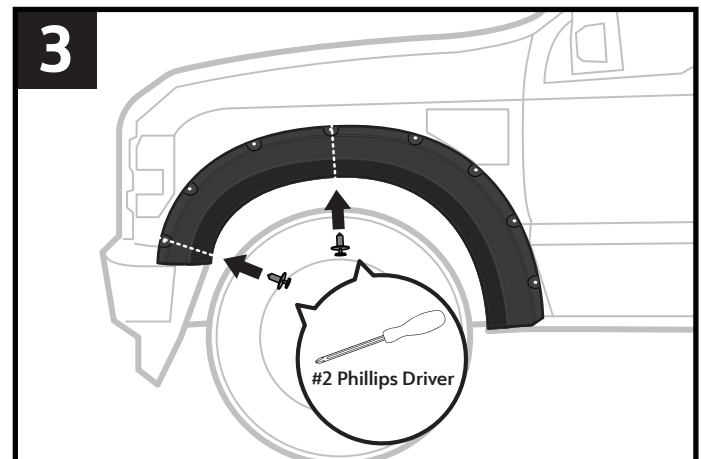
Work gloves are recommended for protection against possible sharp objects during installation.



1. With a 7/32" socket wrench, remove 4 factory screws and save them for reuse.

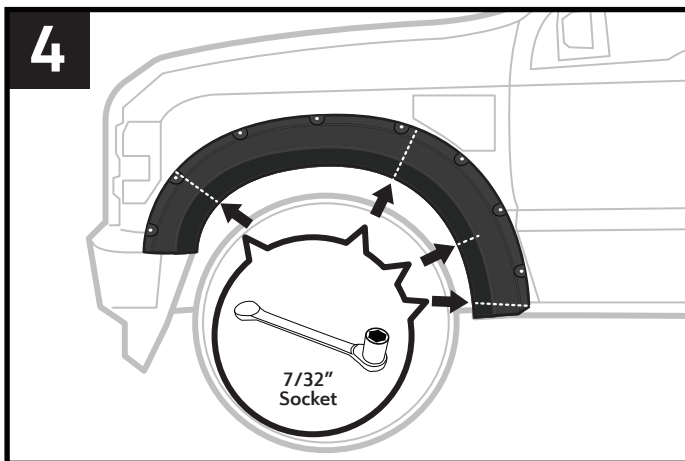


2. Place the Driver Side Front Fender Flare against the Fender.

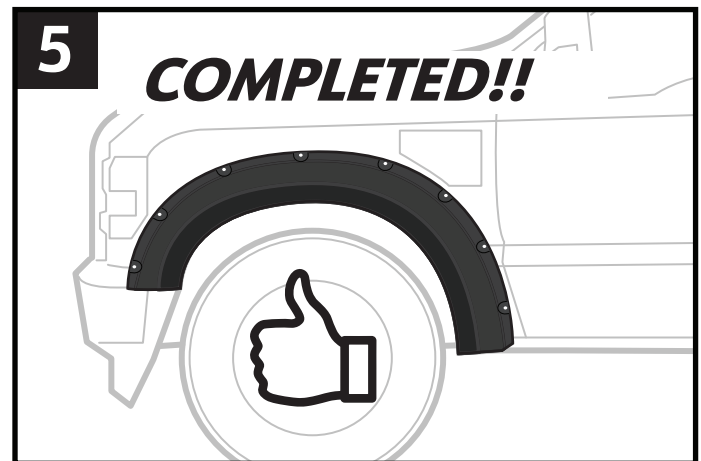


3. Using a #2 Phillips Screwdriver, install two provided Nylon Retainer [1] through the two indicated holes into the fender.

NOTE: Use a push-twist motion.



4. Firmly press and hold flare against fender. Then reinstall the 4 factory screws removed in STEP 1.

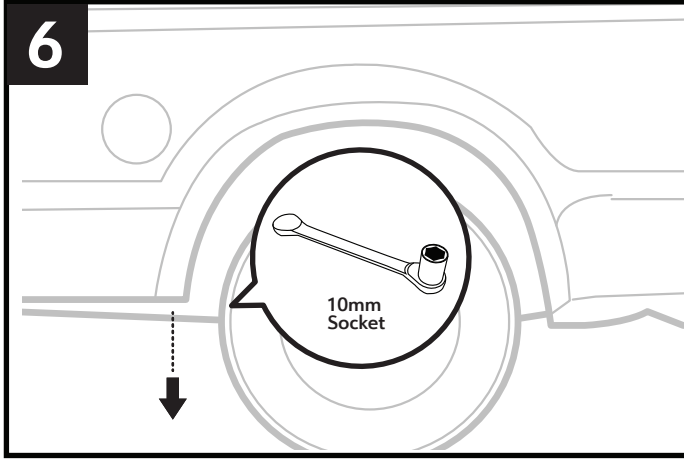


5. Tighten all screws. Repeat STEPS 1 to 5 to install the passenger side front flare.

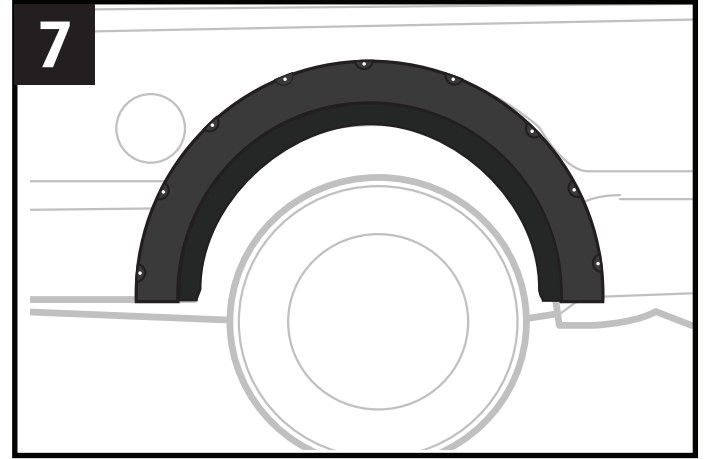
Rear Flares Installation

(Driver Side shown)

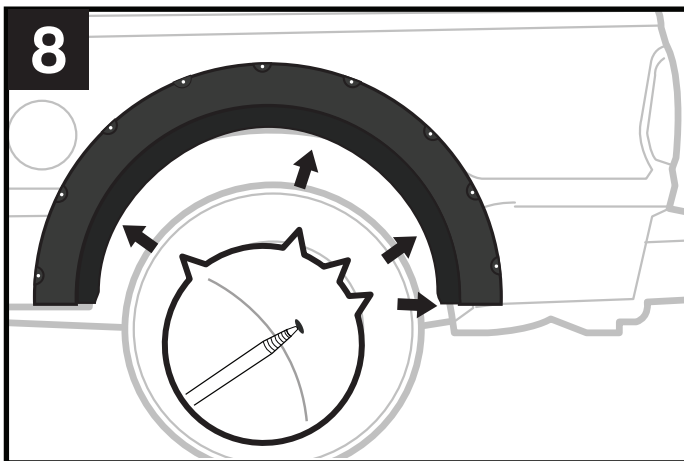
IMPORTANT: Please refer to the labels on the packaging to identify the driver and passenger-side fender flares, which are not identical.



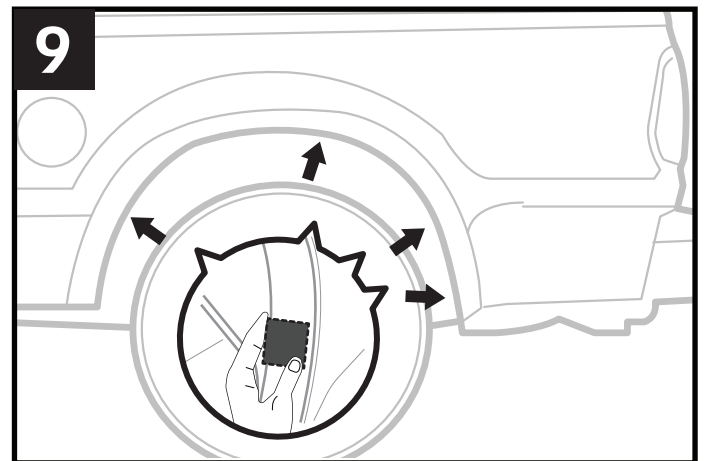
6. Using a 10mm socket, remove the factory hex bolt from the indicated bottom/front area of the wheel well. Keep the screw for reuse.



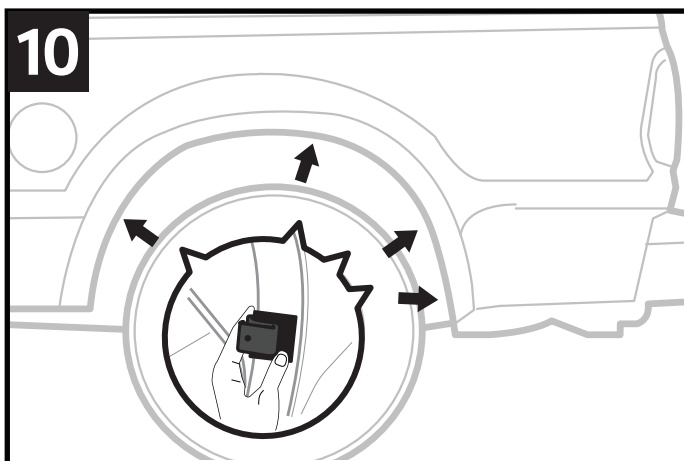
7. Place the Driver Side Rear Fender Flare against the Fender.



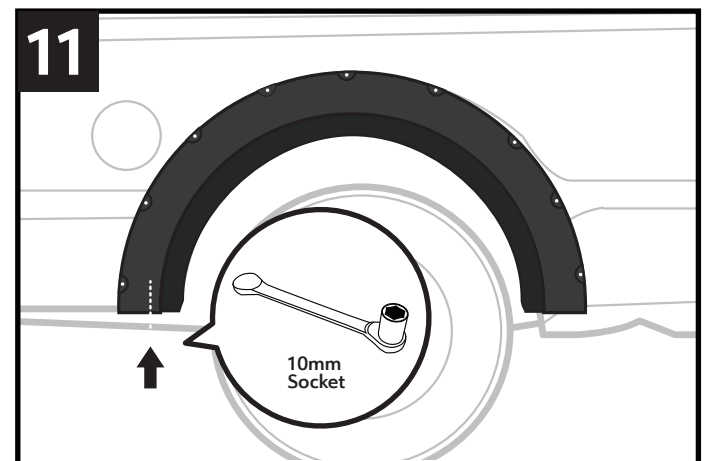
8. Firmly press flare in position. With a grease pencil, mark the 4 hole locations as shown through the flare.



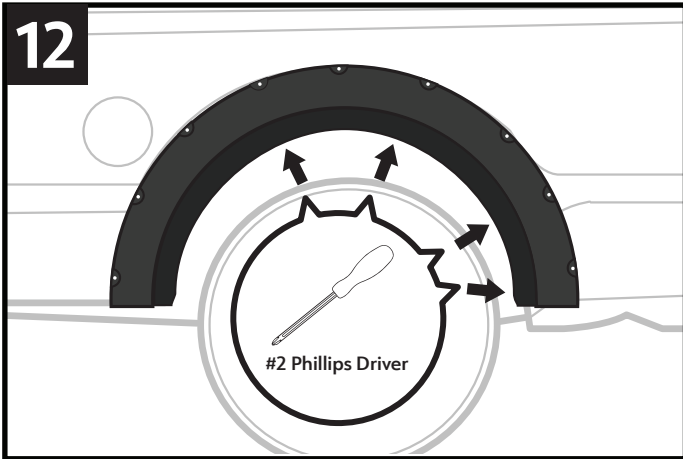
9. Remove flare and wrap the 4 provided Mylar Tabs [F] around the metal sheet by centering them over each mark made in STEP 8.



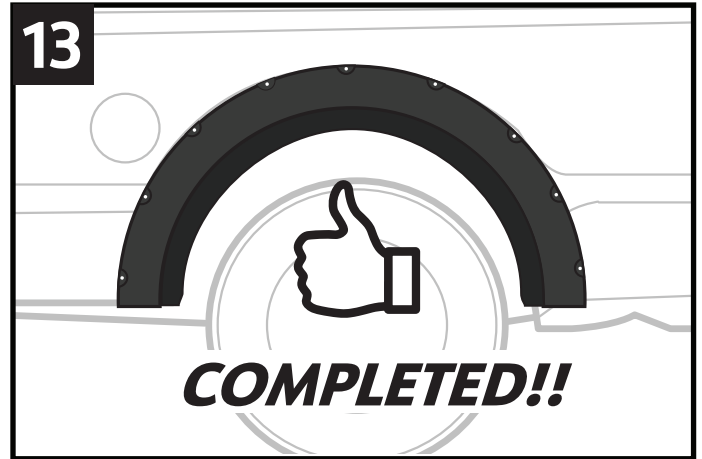
10. Install 4 provided S-Clips [G] over each of the 4 Mylar Tab installed in STEP 9.



11. Again, place and firmly press flare against the fender and reinstall bolt removed in STEP 6.

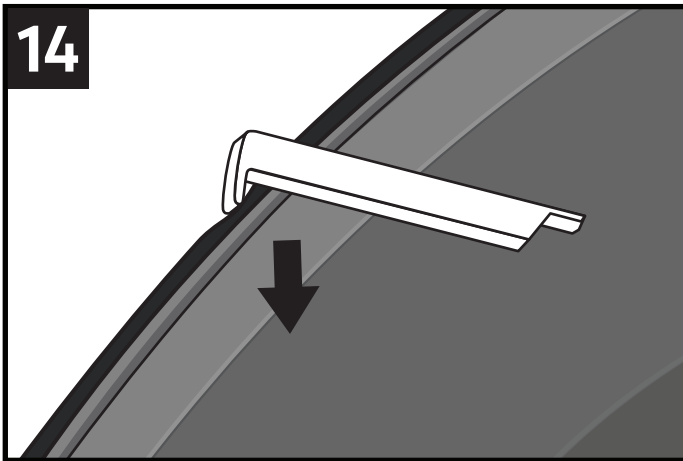


12. Install the 4 provided PH Metal Screws [H] through the 4 marked holes from STEP 8 and into the S-Clips.

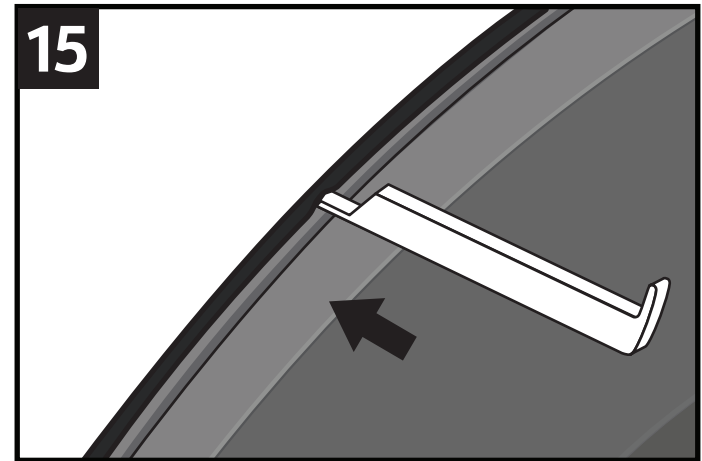


13. Tighten all screws. Repeat STEPS 6 to 13 to install the passenger side rear flare.

Edge Trim Tool Usage (Optional):

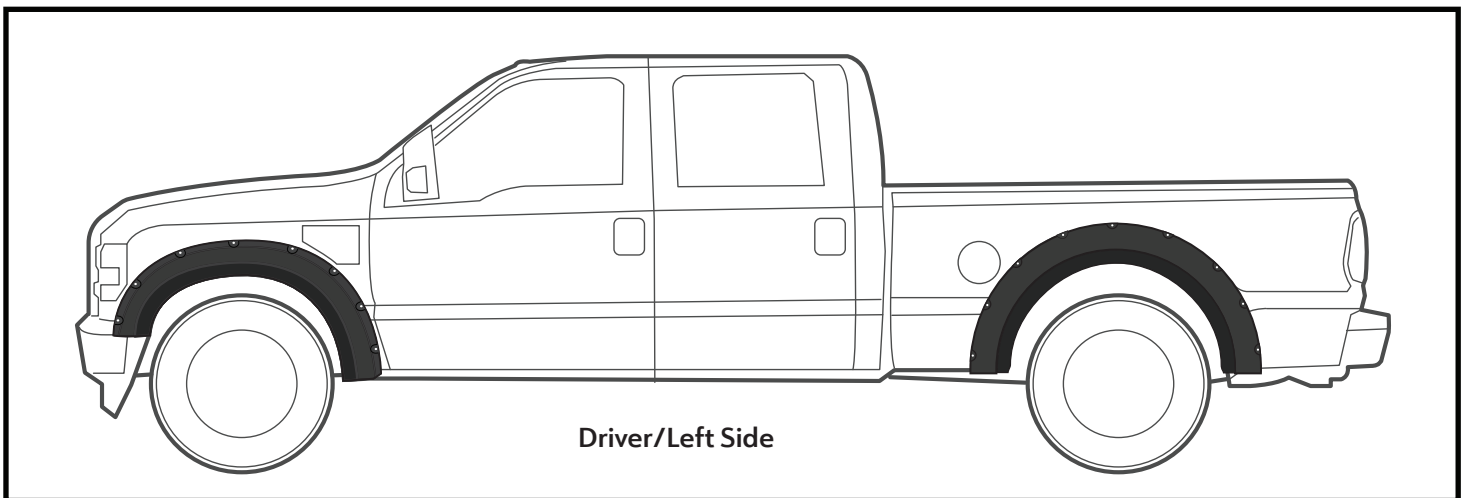


14. If needed, use supplied Edge Trim Tool [J] to trim outer edge by inserting the curved end, then sliding around the entire trim from one end to the other.



15. If needed, use supplied Edge Trim Tool [M] to trim inner edge by inserting the straight end, then sliding around the entire trim from one end to the other.

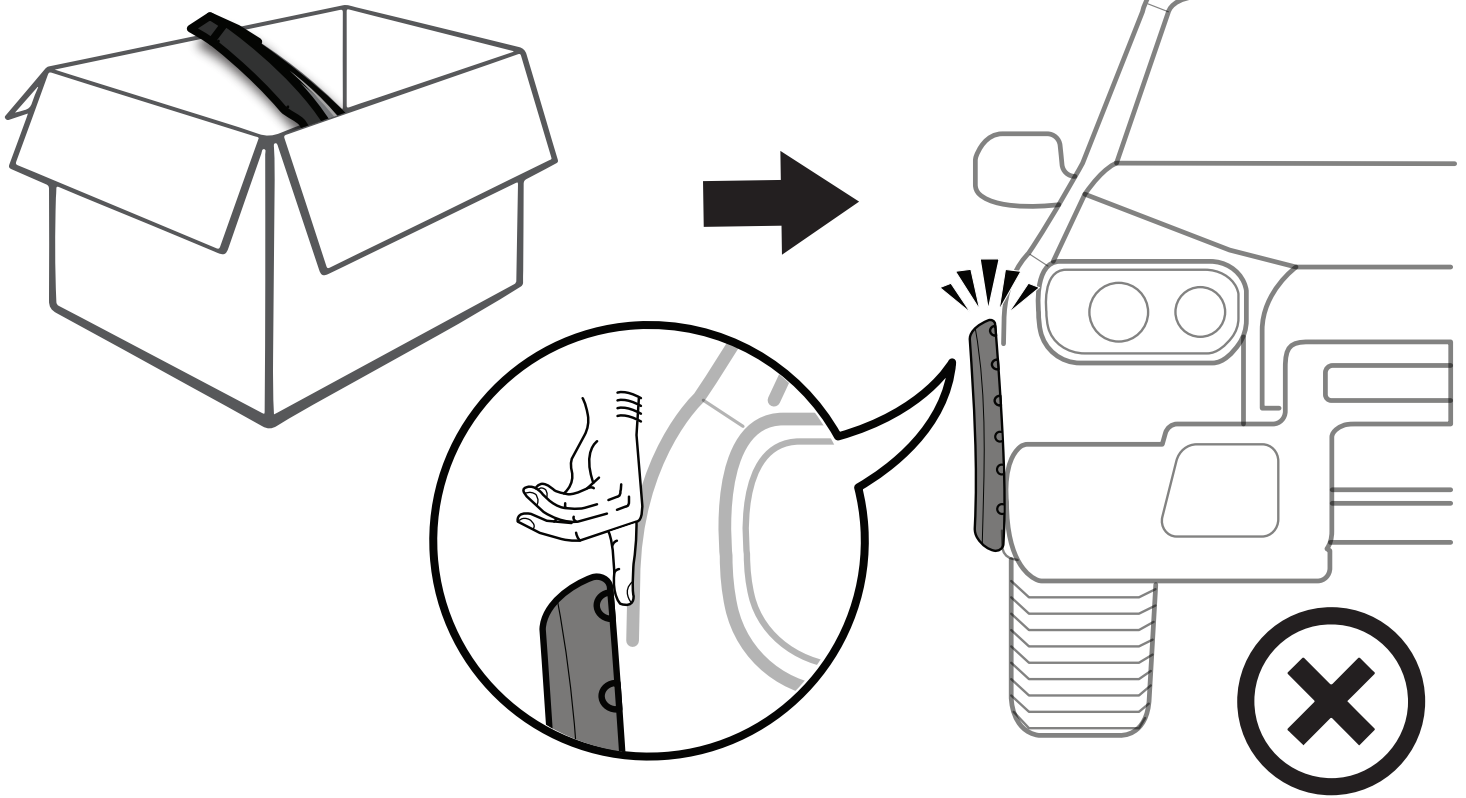
Final Result:



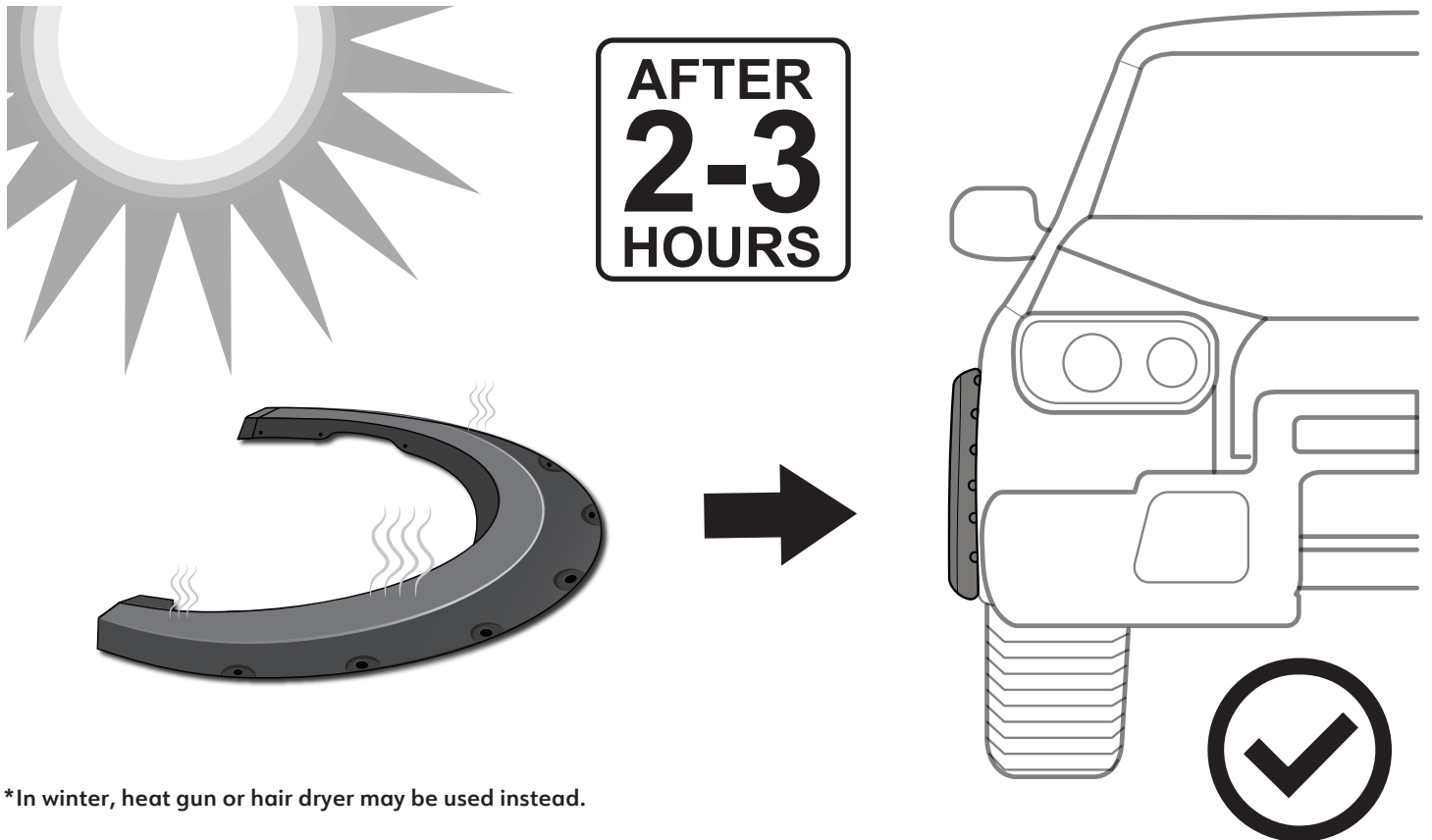
Driver/Left Side

Note: Above image is for reference ONLY, final result may vary.

Fitment or Gap Issue?



Solution!



*In winter, heat gun or hair dryer may be used instead.