



TYGER LanderX

TG-LX3C82318

BEFORE INSTALLATION

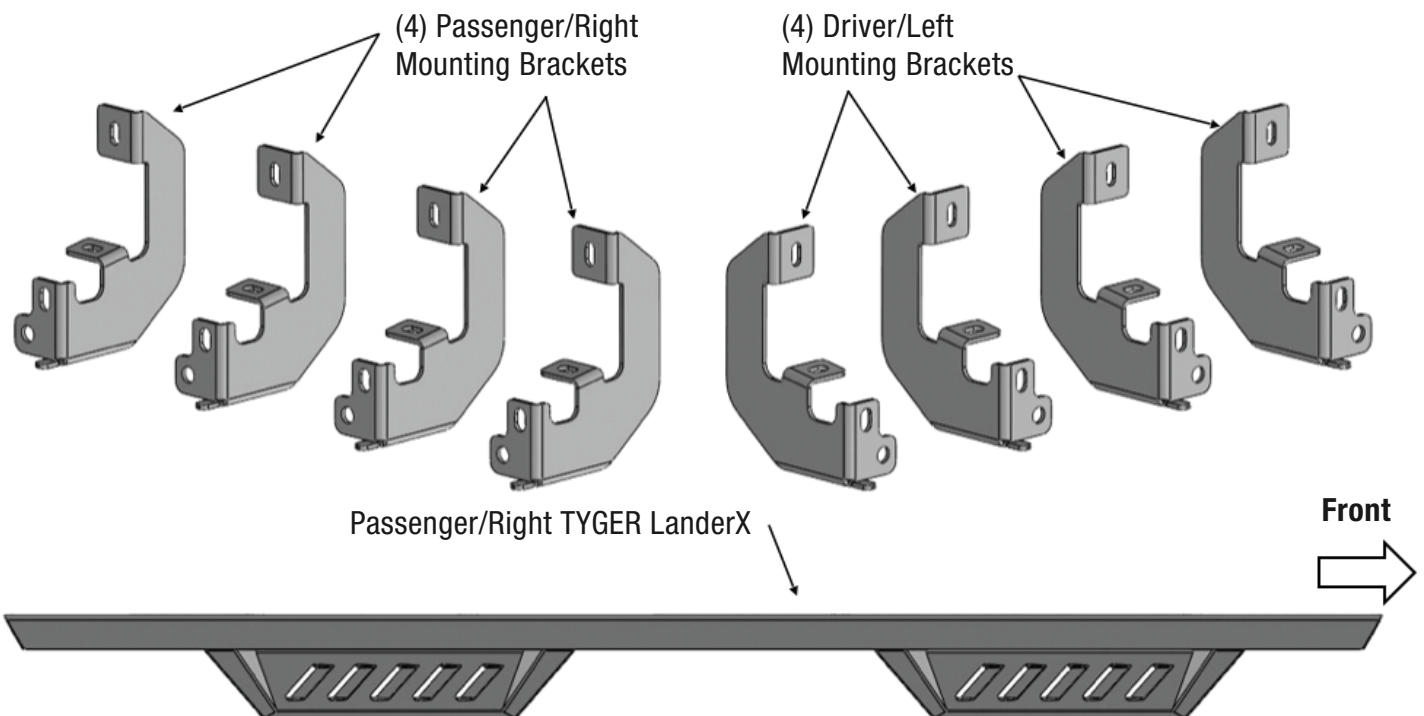
READ INSTRUCTIONS CAREFULLY BEFORE STARTING INSTALLATION. REMOVE CONTENTS FROM BOX AND VERIFY ALL PARTS ARE PRESENT. FAILURE TO IDENTIFY DAMAGE BEFORE INSTALLATION COULD LEAD TO A REJECTION OF ANY CLAIM. IF MISSING PARTS OR ANY DAMAGE FOUND, PLEASE TAKE A PICTURE FOR THE CLAIM PURPOSE. TO FILE YOUR CLAIM, PLEASE VISIT: WWW.TYGERAUTO.COM/CONTACT

TORQUE VALUES

Fastener Size	Class 8.8 Torque (ft-lbs)	Class 10.9 Torque (ft-lbs)
6mm	6-7	6-7
8mm	15-16	22-23
10mm	31-32	44-45
12mm	54-55	78-79
14mm	87-88	125-126

- x1 Driver/Left TYGER LanderX
- x1 Passenger/Right TYGER LanderX
- x4 Driver/Left Mounting Brackets
- x4 Passenger/Right Mounting Brackets
- x16 8mm x 30mm Hex Bolts
- x16 8mm x 25mm Combo Bolts
- x16 8mm Lock Washers
- x16 8mm x 24mm OD x 2mm Flat Washers

Parts List



PROCEDURE:

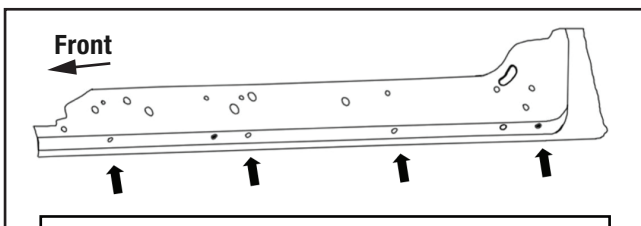
REMOVE CONTENTS FROM BOX. VERIFY ALL PARTS ARE PRESENT. READ INSTRUCTIONS CAREFULLY. ASSISTANCE IS RECOMMENDED.

STEP 1

Start the installation under the Passenger/Right side of the vehicle.

- a. For "Early" 2019 models, locate the 6 plugs along the bottom edge of the body. Mounting Brackets will bolt to the 1st, 3rd, 4th and 6th threaded mounting holes (Fig 1).

Passenger/Right side Installation Pictured

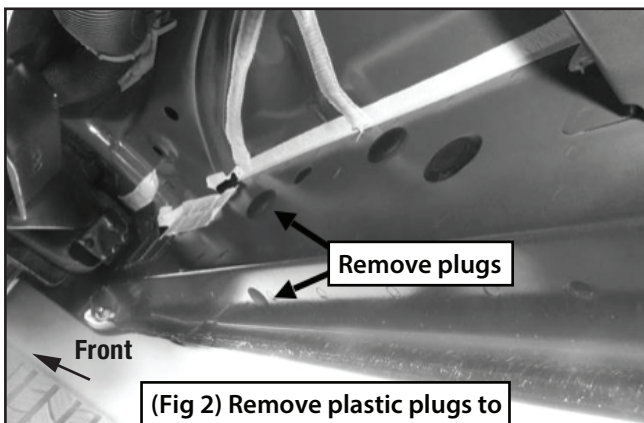


(Fig 1) Passenger/Right "Early" rocker panel mounting locations (arrows) NOTE: Hold Bracket up to body panel to help determine the correct mounting locations.

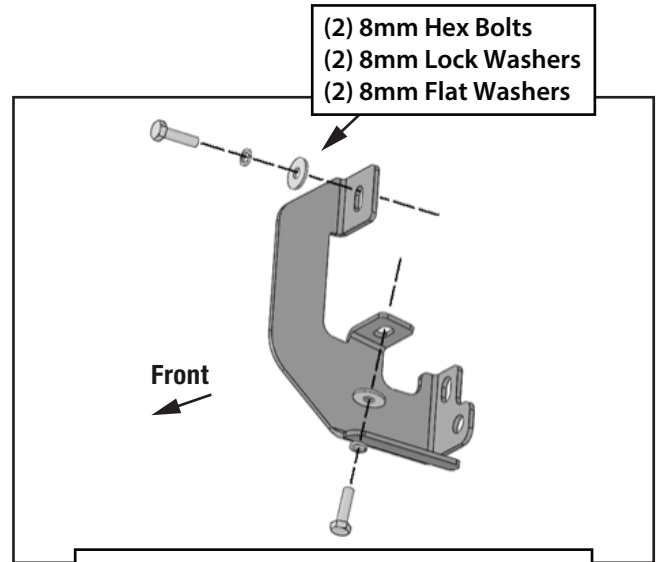
- b. For "Late" 2019 models, all (4) mounting locations will be used.

STEP 2

Remove the plastic plugs from the passenger/right front mounting location. Select (1) Mounting Bracket. Attach the Mounting Bracket to the factory threaded holes with (2) 8mm Hex Bolts, (2) 8mm Lock Washers and (2) 8mm Flat Washers (Figs 2 & 3). DO NOT tighten hardware.



(Fig 2) Remove plastic plugs to uncover threaded inserts

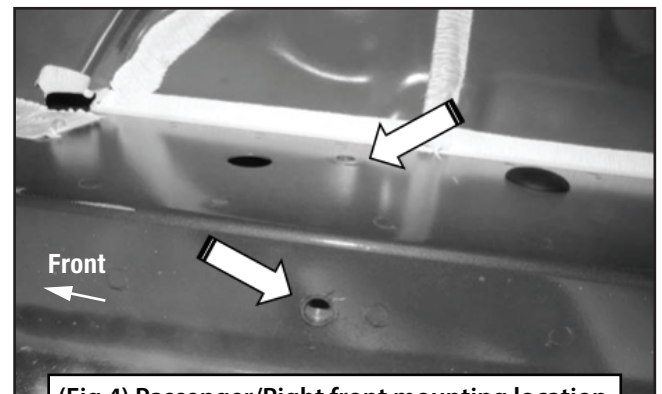


(Fig 3) Attach (1) Passenger/Right Mounting Bracket to the mounting location

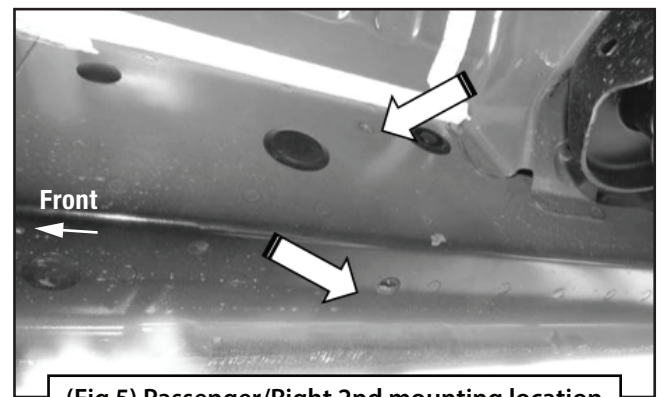
STEP 3

Repeat STEPS 1 & 2 to attach (3) Mounting Brackets to the (3) remaining locations along the rocker panel (Figs 4-7). DO NOT tighten hardware.

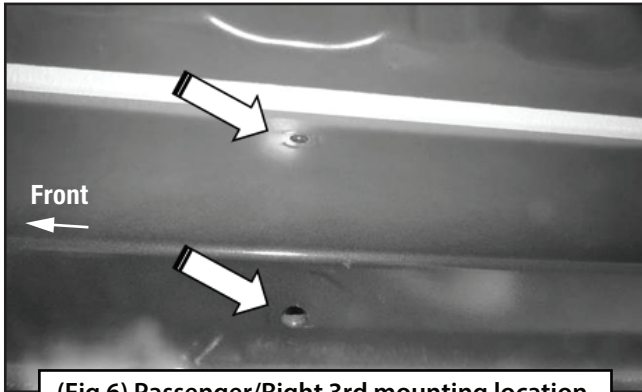
Passenger/Right side Installation Pictured



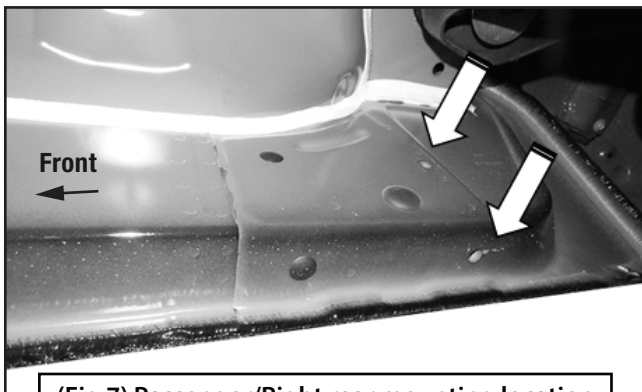
(Fig 4) Passenger/Right front mounting location



(Fig 5) Passenger/Right 2nd mounting location



(Fig 6) Passenger/Right 3rd mounting location

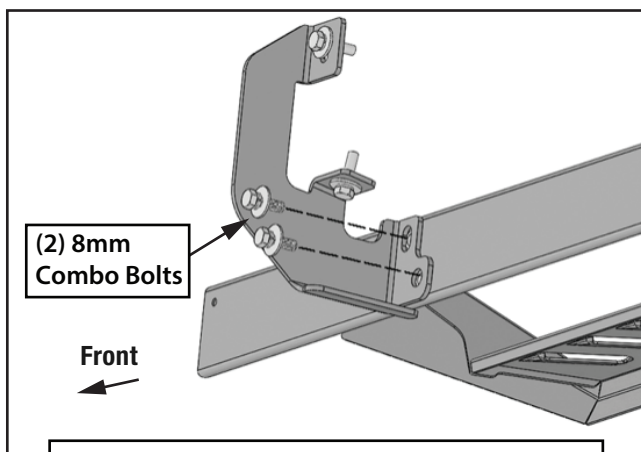


(Fig 7) Passenger/Right rear mounting location

STEP 4

Select the Passenger/Right TYGER LanderX. Attach the TYGER LanderX to the (4) Mounting Brackets with (8) 8mm Combo Bolts (Fig 8). DO NOT tighten hardware.

Passenger/Right side Installation Pictured



(Fig 8) Attach Passenger/Right TYGER LanderX to the Mounting Brackets

STEP 5

Level and adjust the TYGER LanderX, then fully tighten all

STEP 6

Repeat **STEPS 1-5** to attach the Driver/Left TYGER LanderX.

STEP 7

Do periodic inspections to the installation to make sure that all hardware is secure and tight.