



# RISER®

TG-RS6C60238

## BEFORE INSTALLATION

READ INSTRUCTIONS CAREFULLY BEFORE STARTING INSTALLATION. REMOVE CONTENTS FROM BOX AND VERIFY ALL PARTS ARE PRESENT. FAILURE TO IDENTIFY DAMAGE BEFORE INSTALLATION COULD LEAD TO A REJECTION OF ANY CLAIM. IF MISSING PARTS OR ANY DAMAGE FOUND, PLEASE TAKE A PICTURE FOR THE CLAIM PURPOSE. TO FILE YOUR CLAIM, PLEASE VISIT: [WWW.TYGERAUTO.COM/CONTACT](http://WWW.TYGERAUTO.COM/CONTACT)

## TORQUE VALUES

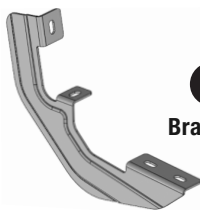
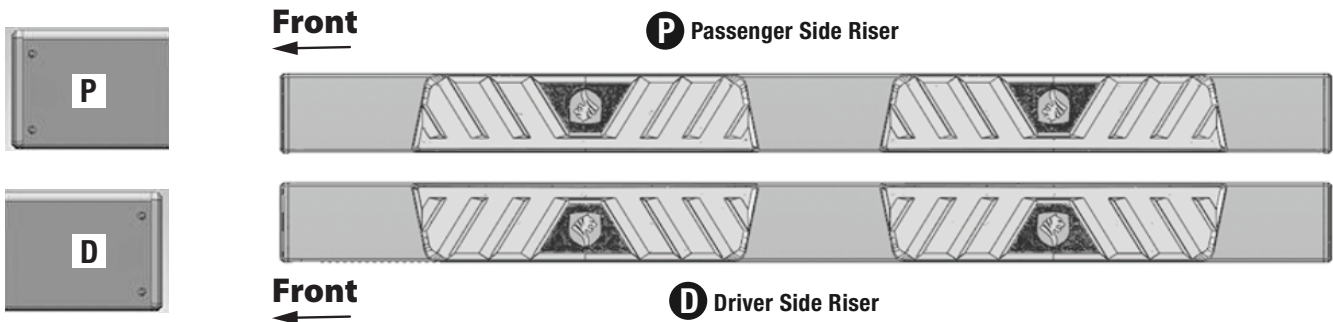
| Fastener Size | Class 8.8 Torque (ft-lbs) | Class 10.9 Torque (ft-lbs) |
|---------------|---------------------------|----------------------------|
| 6mm           | 6-7                       | 6-7                        |
| 8mm           | 15-16                     | 22-23                      |
| 10mm          | 31-32                     | 44-45                      |
| 12mm          | 54-55                     | 78-79                      |
| 14mm          | 87-88                     | 125-126                    |

- x1 Driver Side Riser **D**
- x12 8-1.25mm x 25mm Combo Bolts
- x12 8-1.25mm x 30mm Hex Bolts
- x1 Passenger Side Riser **P**
- x12 8mm Lock Washers
- x6 Brackets
- x12 8mm x 24mm x 2mm Flat Washers

**Parts List**

## Top View

**ATTENTION:** Refer to **D** and **P** labelling on the side of the tubes to determine Driver and Passenger Riser



Combo Bolts



Hex Bolts

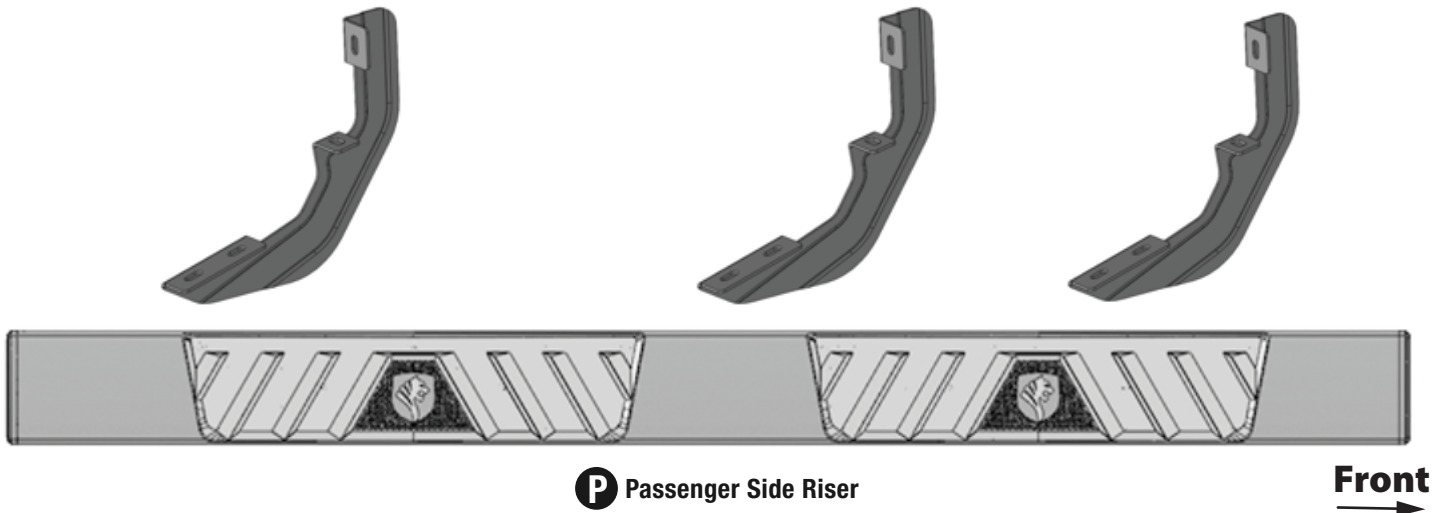
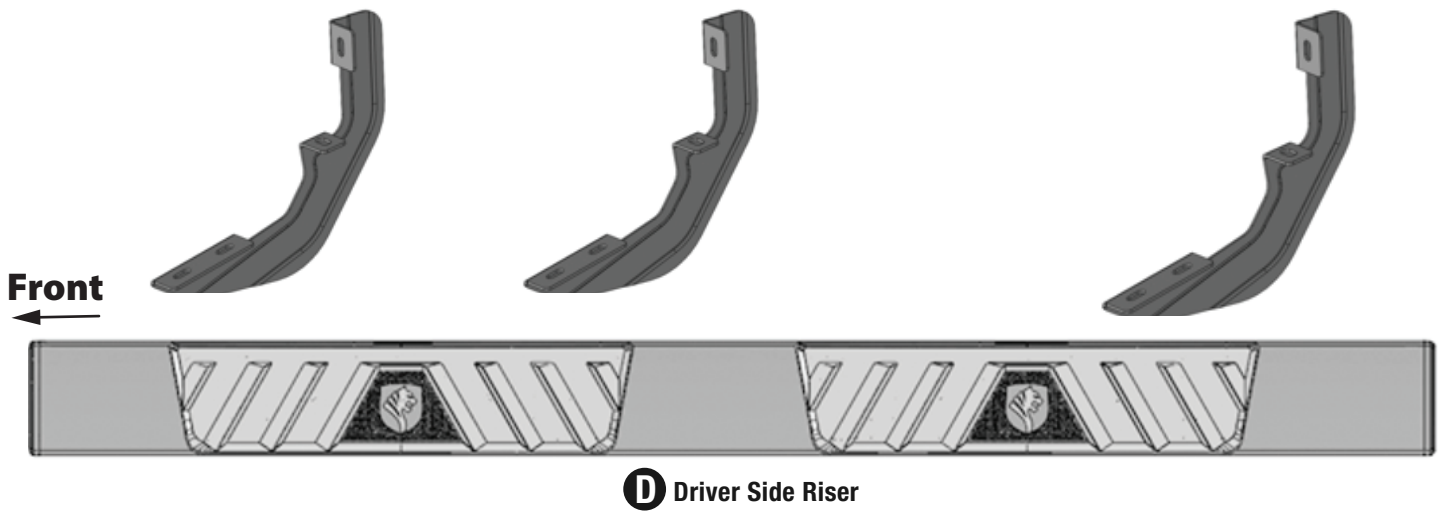


Flat Washers

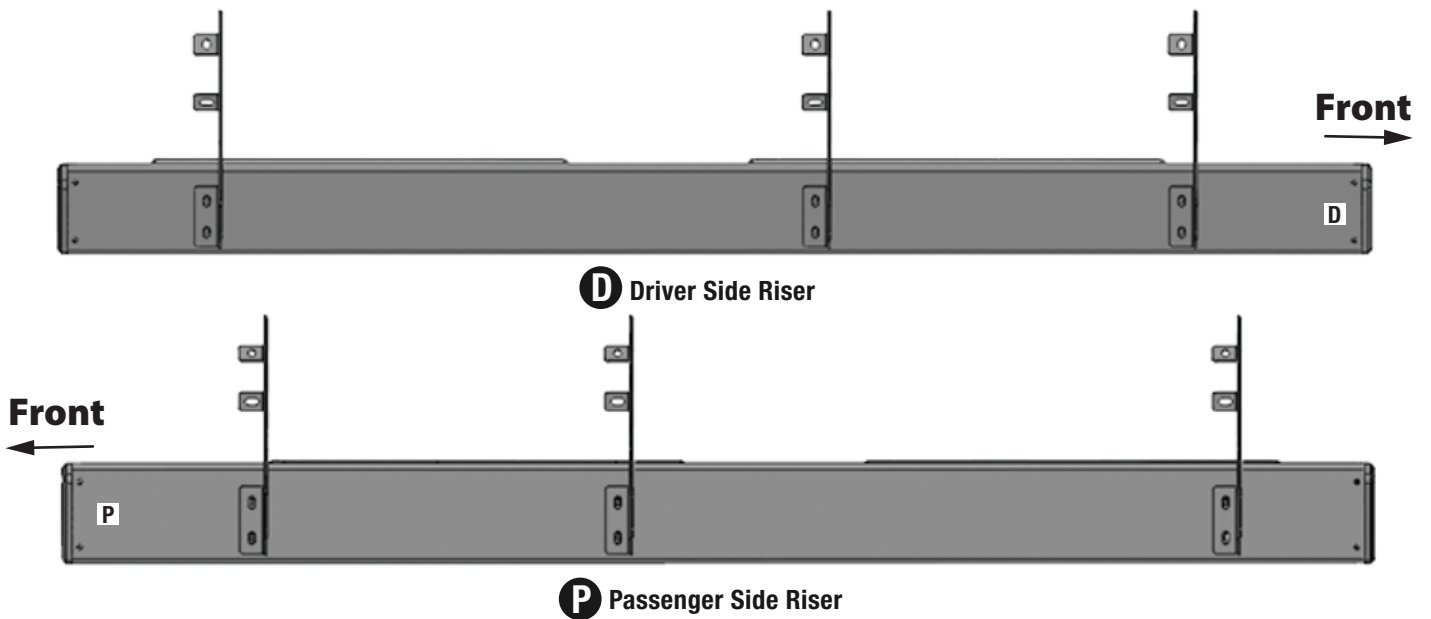


Lock Washers

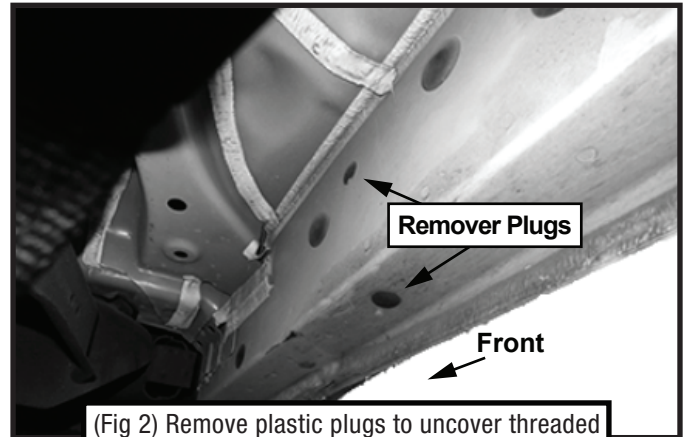
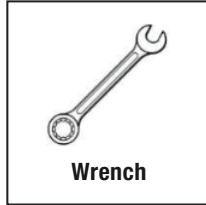
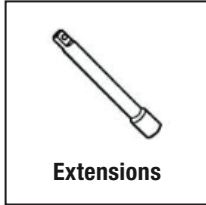
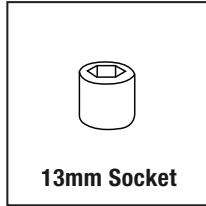
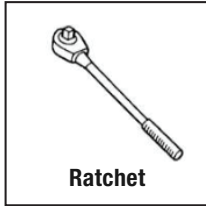
Reference the letters printed on the brackets to determine mounting locations



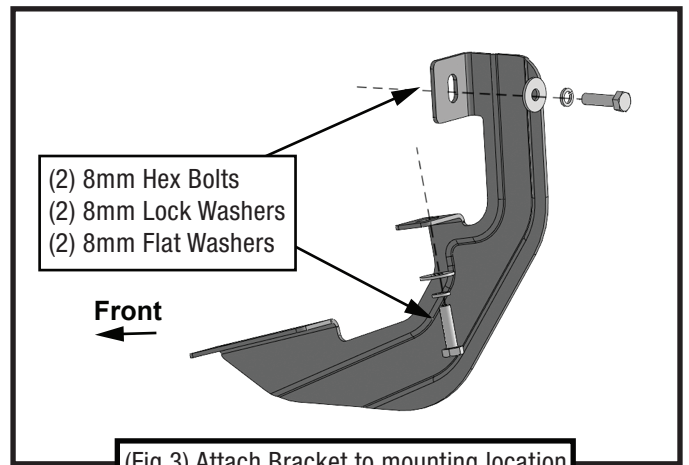
**Bottom View**



## TOOLS REQUIRED

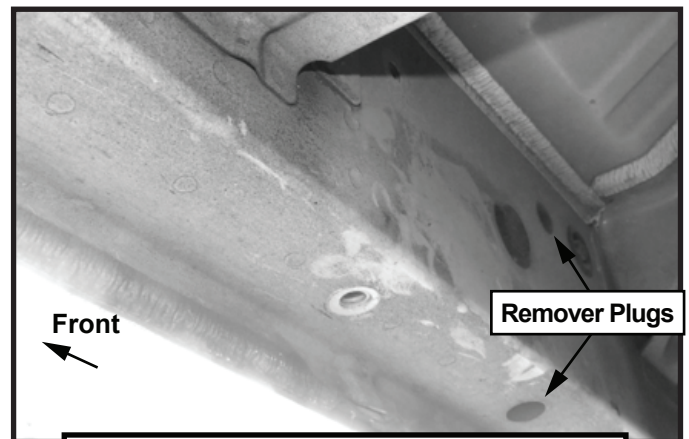


(Fig 2) Remove plastic plugs to uncover threaded inserts at front mounting location (if any)



(Fig 3) Attach Bracket to mounting location

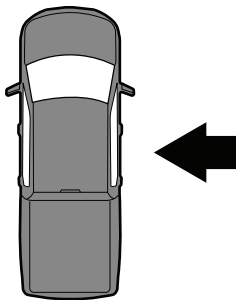
### Passenger-side Center Mounting Area



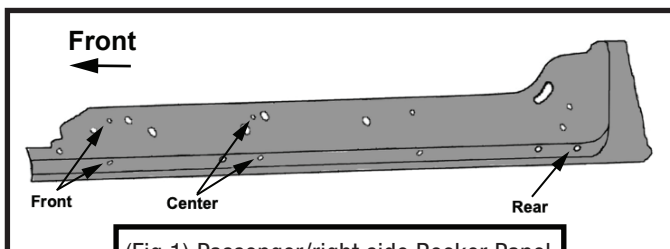
(Fig 4) Remove plastic plugs to uncover threaded inserts for center mounting location. Attach a Bracket to Center Mounting Location (refer to Fig 3)

## STEP 1 MOUNTING BRACKETS

Follow (Fig 1 – 5) to attach the Brackets to the Passenger Side. Then repeat the same steps on the Driver Side.



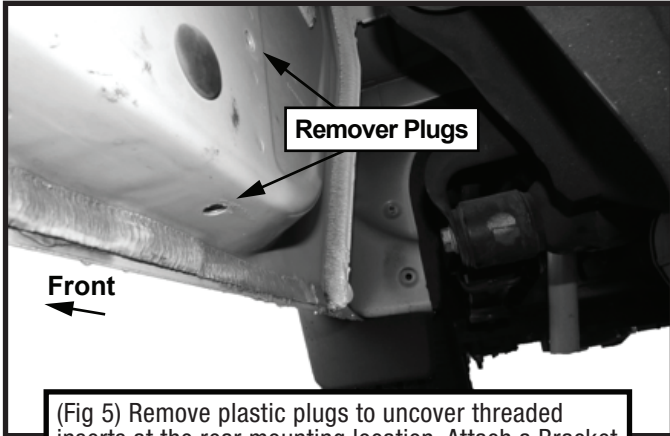
### Passenger-side Front Mounting Area



(Fig 1) Passenger/right side Rocker Panel mounting locations illustrated (arrows)



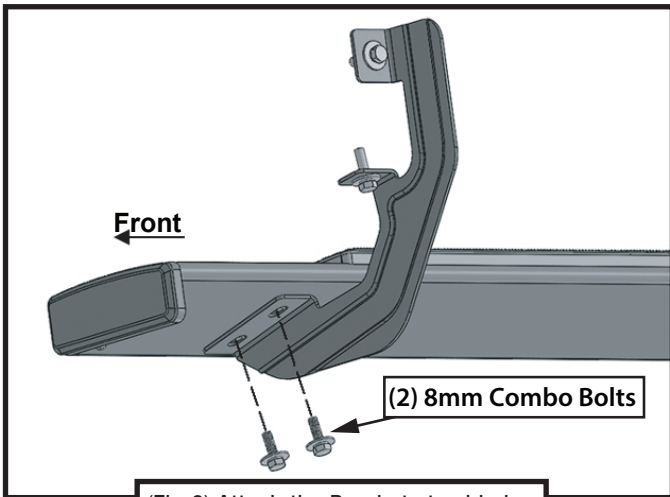
**Passenger-side Rear Mounting Area**



(Fig 5) Remove plastic plugs to uncover threaded inserts at the rear mounting location. Attach a Bracket to Rear Mounting Location (refer to Fig 3)

**STEP 2 MOUNTING RUNNING BOARDS**

Follow (Fig 6) to install the running boards onto each Bracket for both sides.



(Fig 6) Attach the Brackets to side bar using 8mm Combo Bolts

**STEP 3**

Installation is complete. Do periodic inspections to the installation to make sure that all hardware is secure and tight.