



TYGER RIDER®

TG-SS2C35628

BEFORE INSTALLATION

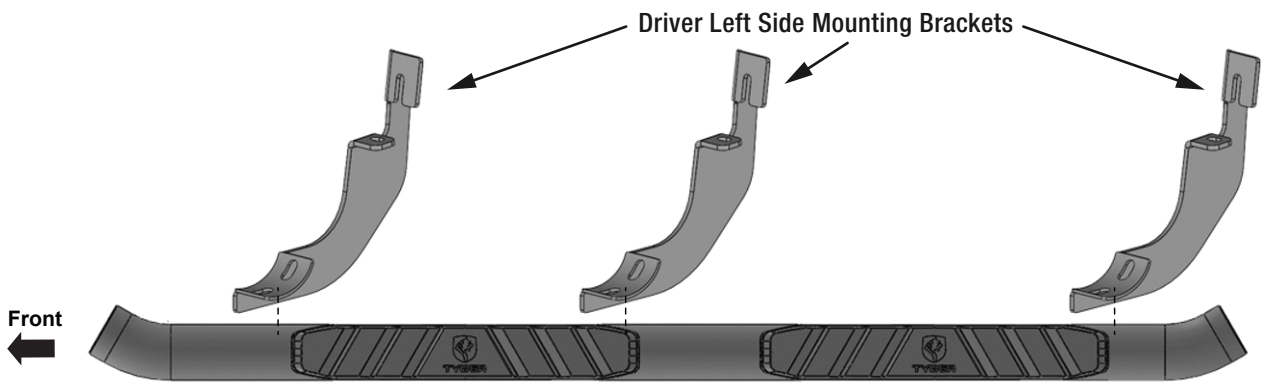
READ INSTRUCTIONS CAREFULLY BEFORE STARTING INSTALLATION. REMOVE CONTENTS FROM BOX AND VERIFY ALL PARTS ARE PRESENT. FAILURE TO IDENTIFY DAMAGE BEFORE INSTALLATION COULD LEAD TO A REJECTION OF ANY CLAIM. IF MISSING PARTS OR ANY DAMAGE FOUND, PLEASE TAKE A PICTURE FOR THE CLAIM PURPOSE. TO FILE YOUR CLAIM, PLEASE VISIT: WWW.TYGERAUTO.COM/CONTACT

TORQUE VALUES

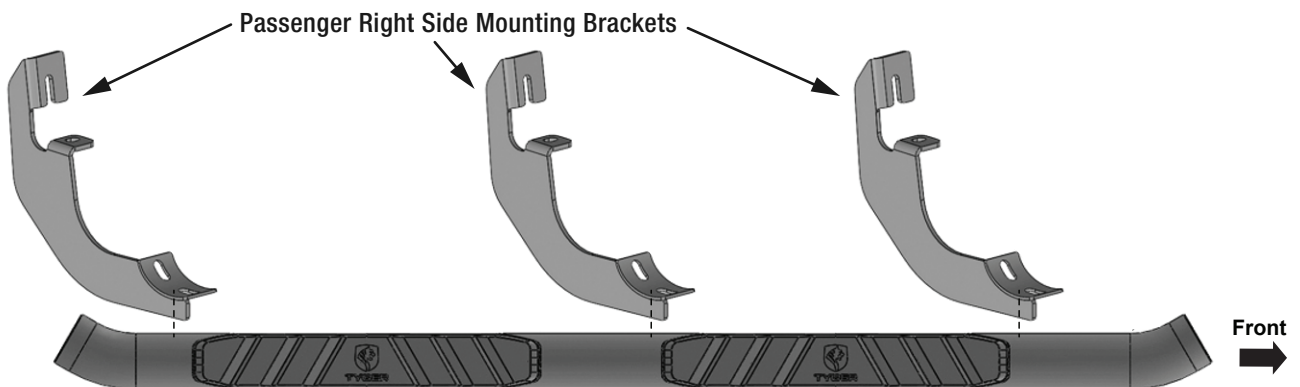
Fastener Size	Class 8.8 Torque (ft-lbs)	Class 10.9 Torque (ft-lbs)
6mm	6-7	6-7
8mm	15-16	22-23
10mm	31-32	44-45
12mm	54-55	78-79
14mm	87-88	125-126

Parts List

- x1 Driver/Left Sidebar
- x1 Passenger/Right Sidebar
- x6 Mounting Brackets
- x12 8mm x 25mm Hex Bolts
- x12 8mm x 25mm Combo Bolts
- x12 8mm Lock Washers
- x12 8mm x 24mm OD x 2mm Flat Washers
- x12 8mm Clip Nuts

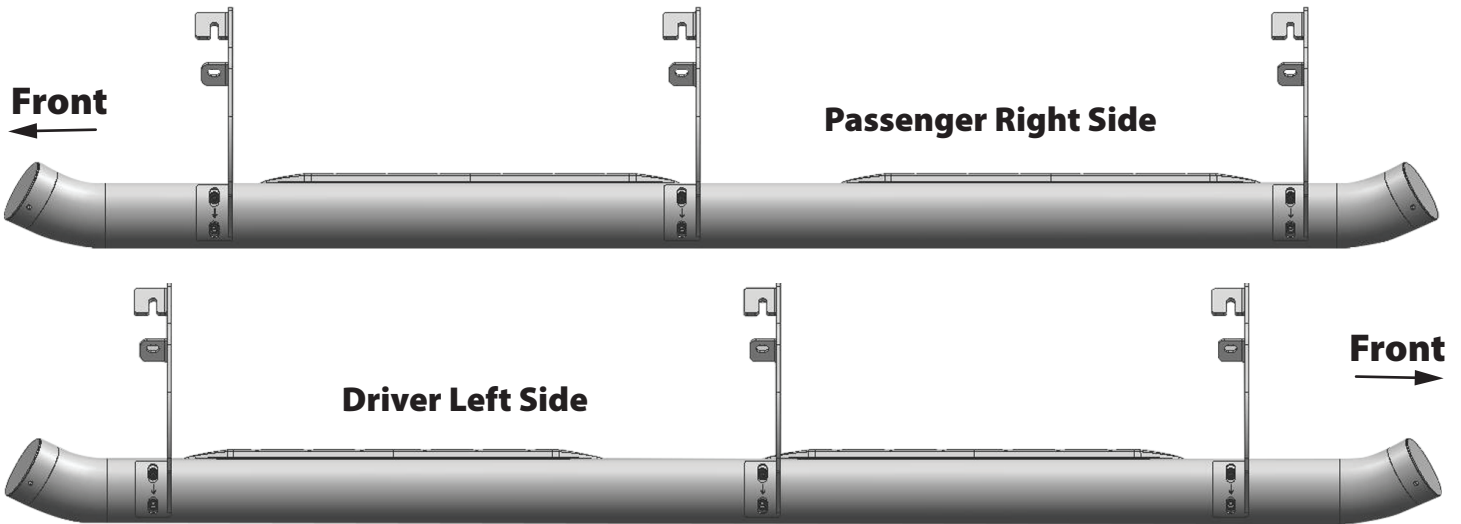


Driver Left Side



Passenger Right Side

Bottom View



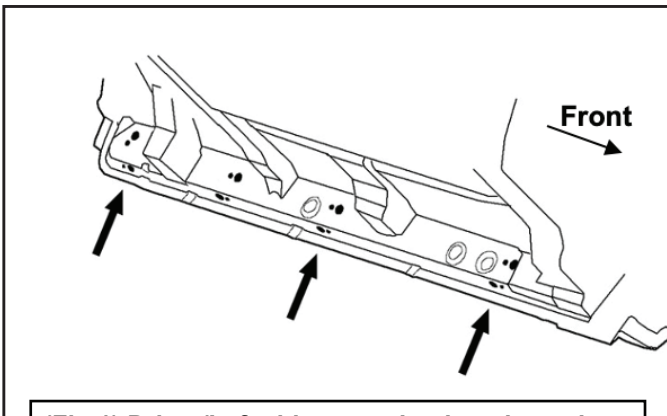
PROCEDURE:
 REMOVE CONTENTS FROM BOX. VERIFY ALL PARTS ARE PRESENT. READ INSTRUCTIONS CAREFULLY BEFORE STARTING INSTALLATION. ASSISTANCE IS RECOMMENDED.

STEP 1

Starting the installation under the Driver/Left side of the vehicle. Locate the 4 factory running board mounting locations along the bottom and inner side of the body (Fig 1). Mounting Brackets will attach to the 1st, 2nd and 4th mounting locations.

NOTE: Hold a Bracket up in place to help determine the mounting holes to use along the bottom and inner side of the body.

Driver/Left Side Installation Pictured

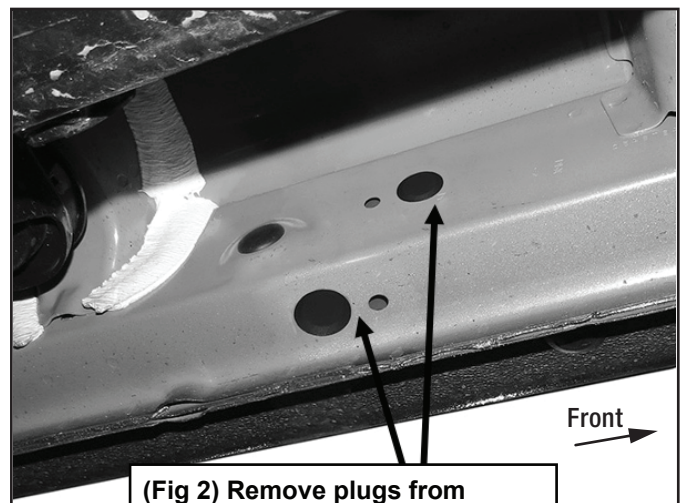


(Fig 1) Driver/Left side mounting locations along bottom and back of body panel illustrated

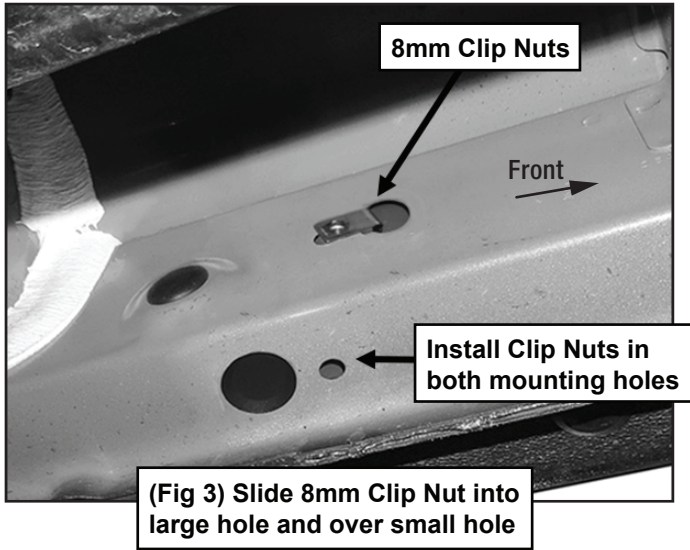
STEP 2

Remove rubber plugs as necessary from the (2) front mounting holes (Fig 2). Select (1) 8mm Clip Nut. Slide the Clip Nut into the large hole and over the smaller hole next to it in the side of the body panel. Line up threaded nut on the Clip Nut with smaller hole in body panel (Fig 3). Repeat to install a 2nd Clip Nut in the remaining front mounting hole in the bottom of the body panel.

Driver/Left Side Installation Pictured



(Fig 2) Remove plugs from mounting locations as necessary



(Fig 3) Slide 8mm Clip Nut into large hole and over small hole

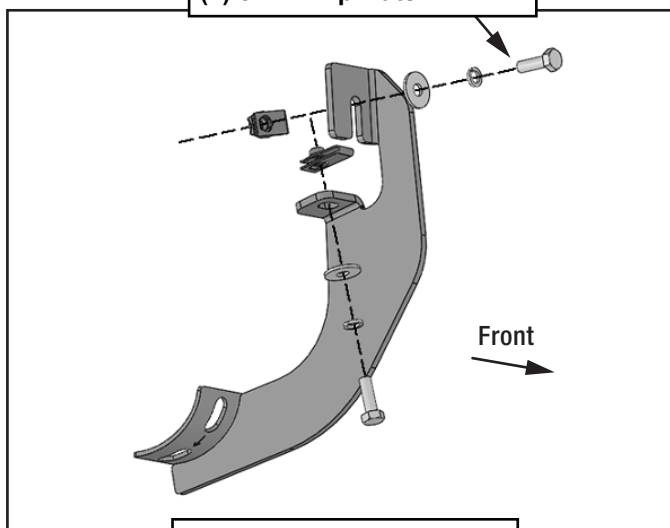
STEP 3

Select (1) Mounting Bracket.

NOTE: All (6) Brackets are universal and will fit left or right side. Attach the Bracket to the (2) Clip Nuts with (2) 8mm Hex Bolts, (2) 8mm Lock Washers and (2) 8mm Flat Washers (Fig 4). Snug but DO NOT fully tighten the hardware.

Driver/Left Side Installation Pictured

- (2) 8mm x 25mm Hex Bolts
- (2) 8mm Lock Washers
- (2) 8mm Flat Washers
- (2) 8mm Clip Nuts



(Fig 4) Attach (1) Mounting Bracket to the Clip Nuts

STEP 4

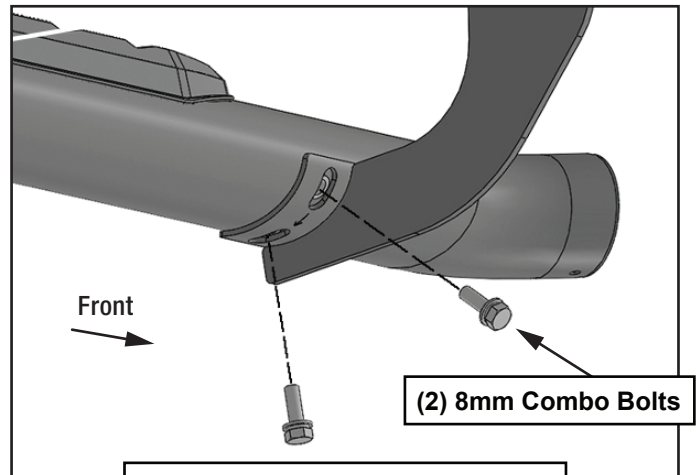
Repeat **STEPS 1-3** to attach (2) Mounting Brackets to the 2nd and rear mounting locations (Fig 1).

STEP 5

Select the Driver/Left Tyger Rider. Place the Tyger Rider onto the cradles of the Mounting Brackets.

NOTE: DO NOT slide front to back or rotate Tyger Rider or damage to the finish may result. Attach the Tyger Rider to the Mounting Brackets with (6) 8mm Combo Bolts (Fig 5). DO NOT tighten hardware.

Driver/Left Side Installation Pictured



(Fig 5) Attach the Driver/Left Tyger Rider to the Mounting Brackets

STEP 6

Level and adjust the Tyger Rider and tighten all hardware.

STEP 7

Repeat **STEPS 1-6** to attach the Passenger/Right Sidebar.

STEP 8

Do periodic inspections to the installation to make sure that all hardware is secure and tight.